

Nutana Safety Audit Final Report



November 3, 2009 | Community Services Department, Planning & Development Branch

Table of Contents

1.0 EXECUTIVE SUMMARY	1
2.0 SUMMARY OF RECOMMENDATIONS.....	3
3.0 BACKGROUND	6
3.1 HISTORY OF NUTANA.....	6
3.2 NUTANA LOCAL AREA PLAN	6
4.0 NUTANA NEIGHBOURHOOD PROFILE.....	8
4.1 DEMOGRAPHIC TRENDS	8
4.2 CRIME ACTIVITY PROFILE.....	10
5.0 THE NUTANA SAFETY AUDIT	16
5.1 PROJECT SUMMARY	16
5.2 NEIGHBOUR TO NEIGHBOUR SURVEY.....	18
5.3 PRIORITIZED AREAS OF CONCERN.....	19
5.4 SAFETY AUDITS	21
6.0 SIGNIFICANT FINDINGS AND RECOMMENDATIONS.....	35
6.1 NATURAL SURVEILLANCE.....	35
6.2 ACCESS CONTROL	38
6.3 IMAGE	39
6.4 TERRITORIALITY	41
6.5 CONFLICTING USER GROUPS & LAND USE MIX.....	43
6.6 CRIME GENERATORS	43
6.7 COHESION	44
6.8 CULTURE & CONNECTIVITY.....	45
6.9 GENERAL	46
7.0 IMPLEMENTATION	47
7.1 SUMMARY OF IMPLEMENTATION ACTIVITIES.....	47
7.2 RECOMMENDATIONS BY LOCATION	47
7.3 PRIORITIES OF THE NUTANA SAFETY SUBCOMMITTEE	50
8.0 APPENDICES	51
8.1 SAFE/UNSAFE AREAS EXERCISE RESULTS	52
8.2 PERCEIVED UNSAFE SITES AND AREAS RESULTS	56
8.3 NUTANA SAFETY ACTION PLAN.....	58
8.4 NEIGHBOUR TO NEIGHBOUR SURVEY AND RESULTS.....	60
8.5 SAFETY AUDIT FORM.....	70
8.6 CRIME PREVENTION THROUGH ENVIRONMENTAL DESIGN.....	78

Acknowledgements

Special thanks to all those who volunteered their time to ensure Nutana remains a safe place to live, work and play.

Nutana Safety Subcommittee (Property Owners, Nutana Community Association, and Business Representatives)	Elected Representatives	City of Saskatoon Administration
<p>Adam Peterson Alan Finnestad Alvin Ulrich Ann and Chris Donald Arno Oldach Brian Flarerty Bruce and Elyse St. George Bruce and Amy Blom Bubs Coleman Cass Cozens Darryl Bazylak Deborah Buck Dianne Wilson-Meyer Doug McDonald Elaine Hnatyshyn Eleanor Cardoza Jane Deneer Jean Kelsey John Kearley Judy Buckle Leanne and Guy Miller Lis and Andres Baldo Margaret and Gerhard Freund Mark Bobyn Michael Feist Nicole Clancy Nigel West Peter Wilkins Robert Wyma Shaun Salen Shirley Lomheim Tanya Ringdal Tess Hodgins Victoria Neufeldt Wilma Poole</p>	<p>Charlie Clark, City Councillor Elaine Hnatyshyn, former City Councillor</p> <p>Organizational Representation</p> <p>25th Street Theatre Centre Inc. (Saskatoon International Fringe Festival)</p> <p>Broadway Business Improvement District</p> <p>Oskayak High School (formerly Joe Duquette High School)</p> <p>Nutana Collegiate</p> <p>Nutana Community Watch</p> <p>Victoria School</p>	<p>Community Development Branch Art Lord, Community Consultant</p> <p>Fire and Protective Services Department</p> <p>Parks Branch Alan Otterbein</p> <p>Saskatoon Light and Power Gord Stushnoff</p> <p>Police Services Cst. Donna Boehm, Community Liaison Officer</p> <p>Recording Secretary Shirlene Palmer</p> <p>Planning and Development Branch Elisabeth Miller Kelly Moore Livia Kellett Mark Emmons Melissa Austin Tyson McShane</p>

1.0 Executive Summary

Neighbourhood safety is important to the citizens of Saskatoon. Residents want to feel safe in their homes and community, they want to know that their family and friends are safe when they are in the neighbourhood, and they want to be sure that their belongings are safe. City Council has recognized this concern and, on behalf of the citizens it represents, encourages the City of Saskatoon Administration to identify progressive methods for addressing these complex concerns. Using the principles of Crime Prevention Through Environmental Design (CPTED) the community, in partnership with Administration, designs a unique plan specific to each particular neighbourhood and safety initiative. In recent years, Risk Assessments, Safety Audits and CPTED Reviews have been conducted in a variety of locations in Saskatoon, such as streets, parks and neighbourhoods.

Through the Nutana Local Area Planning (LAP) process, it became apparent that neighbourhood safety was a concern for the Nutana neighbourhood. The Nutana Safety Audit Report is the result of a recommendation from the Nutana LAP and the product of neighbourhood-wide safety audits performed by the community of Nutana. The Nutana Safety Audit Report was created in partnership with the Nutana Neighbourhood Safety Subcommittee, the Broadway Business Improvement District (BBID), police services, Community Association members, and local residents and stakeholders.

The Nutana Safety Audit process intended to gauge both real and perceived safety concerns throughout the Nutana neighbourhood, and to develop recommendations to address them. The process involved the participation of neighbourhood stakeholders and civic staff in the following Neighbourhood Safety-related activities:

- **Community-Wide Safety Meeting** – The entire Nutana neighbourhood was invited to this meeting which introduced stakeholders to the project and involved them in the identification of safe/unsafe areas.
- **Crime Statistics Analysis** – This compared crime incidence reports with areas perceived as safe/unsafe and identified specific sites/areas that warranted further investigation.
- **Neighbourhood Safety Subcommittee** – The subcommittee met on five occasions throughout the safety process to identify those stakeholders that should be involved in the process, review and prioritize the results of the Community Safety Meeting and Crime Statistics Analysis and establish a Safety Action Plan to guide the safety review process.
- **CPTED Workshop** – This special meeting of the Neighbourhood Safety Subcommittee educated participants on the principles of CPTED.
- **Neighbour to Neighbour Surveys** – During two surveys, participants interviewed residents adjacent to identified areas of concern regarding their perceptions of safety.
- **Safety Audits** – These area-specific walkthrough reviews identified safety concerns and opportunities for crime to occur; five specific locations were audited over the course of four audits.

The four areas identified at the Community Safety Meeting as requiring further investigation (e.g. Safety Audits) were: Cosmopolitan Park, between Broadway Bridge and 14th Street, the Westside of the 800 and 900 blocks of Broadway Avenue, Victoria Avenue, Broadway Avenue, 10th and 11th Street, and Victoria School, as well as the 800 and 1000 blocks of Broadway Avenue. The majority of the findings and recommendations of this report relate to one or more of these areas.

Participants found that in some locations in the review areas vandalism (including graffiti vandalism), litter, and lack of maintenance negatively affected the neighbourhood's image, and consequently users' perceptions of their safety in these areas. Conflicting user groups was also raised as a concern in some areas where the commercial district in Nutana is located directly adjacent to residential properties. Residents expressed concerns with the late night traffic (both vehicle and pedestrian) that often resulted in nuisance behaviour and a lack of parking space for residents in the neighbourhood.

This report contains 15 recommendations (summarized in Section 2.0) that are designed to address a number of safety concerns in Nutana. Recommendations in the Nutana neighbourhood focus on the neighbourhood as a whole but also the four specific areas in the neighbourhood that were of particular interest to the participants. These were the Nutana Collegiate and Victoria School Grounds, Cosmopolitan Park, and the Broadway Avenue area and cover a wide variety of strategies. There are short-term (less than one year) strategies, such as ensuring that everyone in the neighbourhood receives a copy of the Safe at Home booklet so that they can help themselves be safer, medium-term strategies that may require more research on options and funding such as the reassessment of lighting adjacent to Cosmopolitan Park, and long-term (five to ten years) strategies that will take longer to implement due to funding, complexity, or multiple partners. Implementation of the report's recommendations involves the participation of a range of civic and community partners.

The consultation process for the Nutana neighbourhood provided stakeholders with a number of opportunities to identify those neighbourhood safety issues that are of the greatest concern, and hence priorities for implementation. A number of recommendations in this report are intended to be implemented in conjunction with the redesign of the Nutana Collegiate and Victoria School park space. These, and any other recommendations that can be coordinated with ongoing capital projects or other LAP/Neighbourhood Safety initiatives, are considered to be priorities for implementation. Recommendations related to easing the conflict between diverse user groups in the area is also a high priority. To ensure that recommendations are implemented in an appropriate timeframe and that adequate resources are allocated, this report calls for the coordination of operating and/or capital budget costs between affected civic departments.

2.0 Summary of Recommendations

6.1 NATURAL SURVEILLANCE

- 6.1.1 COSMOPOLITAN PARK FOLIAGE:** That the Parks Branch, Infrastructure Services Department trim overgrown trees and bushes along the 600 and 700 blocks of Saskatchewan Crescent East, to increase natural surveillance, sightlines and help reduce hiding places in the area.
- 6.1.2 SASKATCHEWAN CRESCENT EAST LIGHTING:** That Saskatoon Light & Power review the feasibility of replacing the existing street lighting on the 600 to 900 blocks of Saskatchewan Crescent East in 2010, under the existing Street Lighting Upgrade Capital Budget program.
- 6.1.3 ELIMINATE HIDING PLACES:** That the Planning and Development Branch, Community Services Department develop a Safety Fact Sheet on eliminating hiding places behind garbage containers in lanes, and alcoves in front and behind the local businesses on Broadway Avenue and that the Broadway Business Improvement District distribute it to their members.
- 6.1.4 LANE TREE/BUSH TRIMMING:** That the Municipal Engineering Branch, Infrastructure Services Department work with the Planning and Development Branch, Community Services, the Nutana Community Association and the Broadway Business Improvement District (BID) to determine the feasibility of a one-time lane project to remove all volunteer trees and bushes and trim overhanging foliage in the lanes between Dufferin Avenue and Eastlake Avenue and between 8th Street and 12th Street and develop a plan to educate Nutana residents and business owners on the importance of maintaining an appropriate level of lane maintenance that will reduce the opportunity for crime in the area.

6.2 ACCESS CONTROL

- 6.2.1 SCHOOL GROUND ENTRANCES:** That the Planning and Development Branch, Community Services Department and the Nutana Community Association encourage Nutana Collegiate and Victoria School to paint the posts at each entrance to the school grounds a bright color. This will ensure that they are easily recognized as points of entrance/exit points.

6.3 IMAGE

- 6.3.1 MURAL ARTWORK:** That the Community Development Branch, Community Services Department and the Municipal Engineering Branch, Infrastructure Services Department work with the Nutana Community Association and the Broadway Business Improvement District to discourage graffiti vandalism in the area by adding mural artwork, created by local artists on the pillars adjacent to the paved pathway, in Cosmopolitan Park, under the east end of the Broadway Bridge.

- 6.3.2 PROPERTY MAINTENANCE:** That the Planning and Development Branch, Community Services Department, the Nutana Community Association, and the Broadway Business Improvement District host an information meeting to educate residents and business owners on the City of Saskatoon Property Maintenance and Nuisance Abatement Bylaw 8175 specifically aimed at lane maintenance.

6.4 TERRITORIALITY

- 6.4.1 NUTANA NEIGHBOURHOOD WELCOME SIGN:** That the Planning and Development Branch, Community Services Department, the Nutana Community Association, and the Broadway Business District meet to discuss the feasibility of a Welcome Sign in the Nutana neighbourhood that would compliment and identify the neighbourhood. This meeting would include a discussion of funding sources and an appropriate site location and design.
- 6.4.2 COSMOPOLITAN PARK SIGNAGE:** That the Parks Branch, Infrastructure Services Department and the Planning and Development Branch, Community Services Department meet with the Meewasin Valley Authority to determine the feasibility of installing signage on the lower and upper Meewasin Trails directing users to use the promenade along Saskatchewan Crescent after dark.
- 6.4.3 GRAFFITI VANDALISM:** That the Planning and Development Branch and the Community Development Branch, Community Services Department meet with the Broadway Business Improvement District to discuss distribution of the Reducing Graffiti in our Community brochure to their members to help educate business owners on existing programs to combat graffiti vandalism.

6.5 CONFLICTING USER GROUPS & LAND USE MIX

- 6.5.1 “RESPECT THE NEIGHBOURHOOD” SIGNAGE:** That the Planning and Development Branch, Community Services Department meet with the Nutana Community Association and the Broadway Business Improvement District to develop and place highly visible signage in strategic locations where commercial use and residential use may conflict. These signs should encourage respect of the neighbourhood residents in a positive matter.

6.6 CRIME GENERATORS

- 6.6.1 24-HOUR CONVENIENCE STORE:** That the Planning and Development Branch, Community Services Department and the Broadway Business Improvement District meet with the convenience store Management to address known safety issues and possible remedies to improve perception of safety and reduce the opportunity of nuisance and inappropriate behaviour in the area.

6.7 COHESION

- 6.7.1 SAFE AT HOME BOOKLET:** That the Planning and Development Branch, Community Services Department ensure that the Nutana Community Association receive copies of the “Safe At Home” booklet and that the booklet be advertised in the Community newsletter and available to residents at a convenient neighbourhood location.

6.8 CULTURE & CONNECTIVITY

- 6.8.1 COMMUNITY-BASED ACTIVITIES:** That the Community Development Branch, Community Services Department work with the Nutana Community Association to identify the support for formal or informal community-based activities that would bring together the neighbourhood stakeholders at the neighbourhood level. The redevelopment of Victoria School Park and the Nutana Collegiate Park offers an opportunity to establish additional community programming and activities, such as local festivals which encourage walking or biking to the event.

6.9 GENERAL

- 6.9.1 COORDINATION OF IMPLEMENTATION BUDGETS:** That the Neighbourhood Planning Section contact all identified departments to coordinate the estimated operating and/or capital budgets and submit a comprehensive Neighbourhood Safety budget request to City Council for funding and implementing these recommendations once the report has been approved.

3.0 Background

3.1 HISTORY OF NUTANA

The Nutana neighbourhood is a historically significant community in the settlement history of Saskatoon. Originally settled by the Temperance Colonization Society in 1882, the Village of Nutana began as the Temperance Colony. These original settlers laid the plans which continue to define the physical characteristics of Nutana today: broad streets, boulevards, open space and riverbank protection.

The Village of Nutana was incorporated in 1903. In 1906, Nutana joined with the Town of Saskatoon and the Village of Riversdale to become the City of Saskatoon.

The Broadway area became a focal point for Nutana early on; its commercial heart. The presence of commercial and community facilities in the Broadway area contributed to making a complete community where residents could fulfill their daily needs in proximity to their homes. The relationship between commercial and residential interests in Nutana has played an important role throughout the community's evolution.

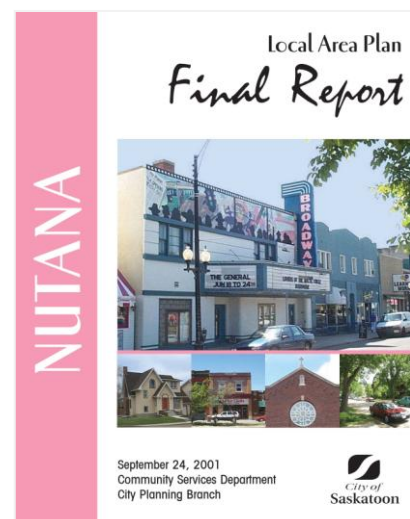
3.2 NUTANA LOCAL AREA PLAN

Local Area Planning is a public, participation-oriented planning approach to developing comprehensive neighbourhood plans that give residents, business owners and other stakeholders an active role in determining the future of their neighbourhood. Participants work with each other to identify issues, develop goals and outline strategies to ensure the long-term success of the neighbourhood. Their input is used to create a Local Area Plan (LAP), which sets out objectives and policies to guide growth and development at the neighbourhood level.

Nine LAPs have been adopted by City Council since 1998. These include the areas of Airport Industrial, Caswell Hill, King George, Nutana, Pleasant Hill, Sutherland, Warehouse District, West Industrial and most recently, Riversdale.

The Nutana Local Area Plan (LAP) was adopted by City Council on September 24, 2001. Through the LAP process, it became apparent that neighbourhood safety was one of the top issues for the Nutana neighbourhood. The Nutana LAP Committee identified three neighbourhood safety goals:

- To ensure that the Broadway Area remains a safe place to live, work and visit;
- To ensure that local property owners and users receive right of reasonable use from their property;
- To foster a long-term community, cooperative approach to safety and security.



Among the directives of the report were recommendations to assist in improving safety for local residents, property and business owners, as well as other Nutana stakeholders. The neighbourhood safety recommendation of the Nutana LAP included:

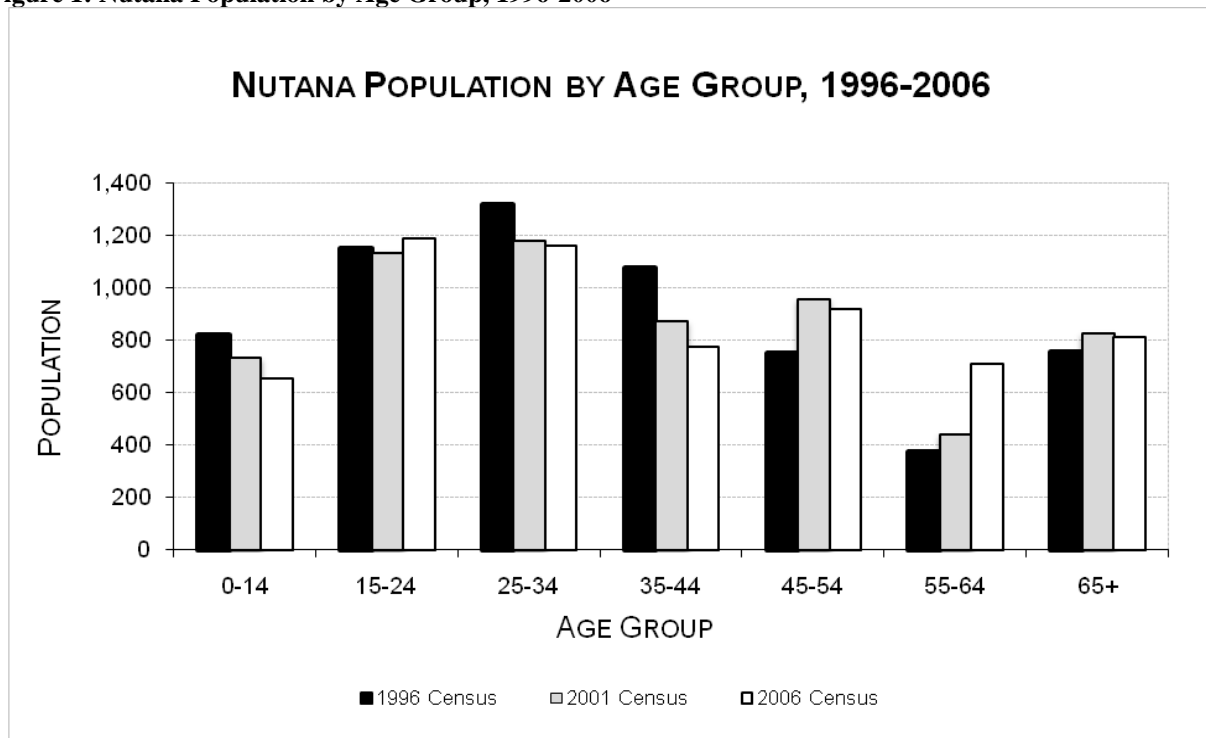
- 4.1** That the Community Services Department work with the Broadway Business Improvement District, the Nutana Community Association, and other agencies to develop and promote an action plan reduce the physical opportunity for crime using Crime Prevention Through Environmental Design (CPTED) principles.

4.0 Nutana Neighbourhood Profile

4.1 DEMOGRAPHIC TRENDS

Demographic statistics provide an initial picture of the present state and potential future condition of Nutana. Figure 1 shows the age distribution between the number of children, young adults and adults in the neighbourhood. The population in Nutana has remained relatively stable over the last 10 years, with the majority of the population being 25 years of age and over. The total population of Nutana has decreased slightly from 6,245 in 1996 to 6,205 in 2006, about a 1.0 percent decrease.

Figure 1: Nutana Population by Age Group, 1996-2006



Source: 1996, 2001, 2006 Census. 100% sample.

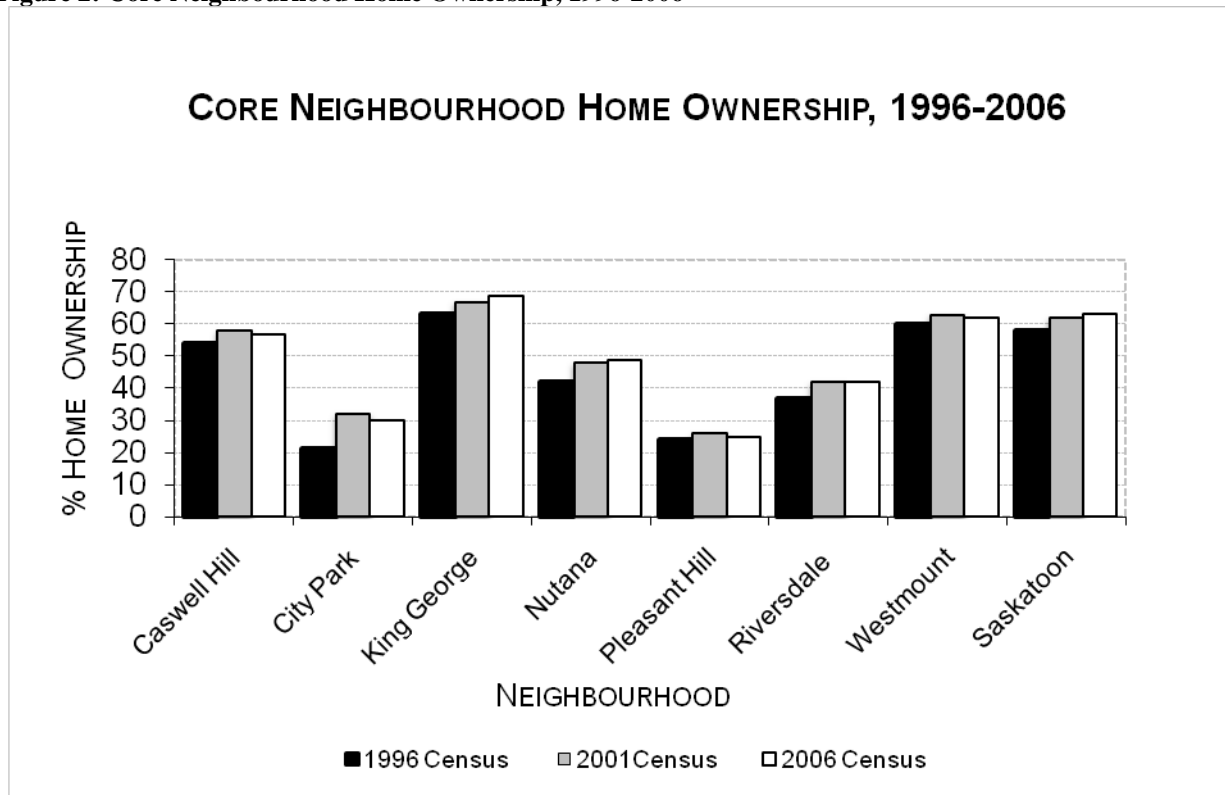
Nutana has a very adult population with 52.4 percent of the population between 25 to 64 years of age. The population aged 0 to 19 years make up 15.7 percent of the neighbourhood and those 65 years of age and over make up 13.7 percent of the neighbourhood population. Since Nutana is in close proximity to the South Saskatchewan River and the University of Saskatchewan with a wide variety of amenities within and surrounding the neighbourhood, it is an attractive neighbourhood for students and families.

According to the Saskatoon Neighbourhood Profiles 9th Edition, approximately 44.1 percent of households in Nutana were one-family households, while 55.3 percent were non-family households, and the remaining 1.0 percent made up multiple-family households. The average household size in Nutana was 1.9, compared to an average of 2.4 of the City's population as a whole.

The average family income in Nutana was \$67,326 in 2006, a decrease of 20.1 percent from 2001 (\$84, 282). The citywide average income in 2006 was \$64,254.

Nutana is one of the most attractive neighbourhoods in Saskatoon to live, however the average selling price of a house is higher compared to other neighbourhoods. In 2006, the average selling price for a single family dwelling unit in Nutana was \$278,228, which was higher than the City of Saskatoon’s average selling price of \$225,128. The Nutana neighbourhood consists of 3,325 dwelling units, of which 1,225 are one-unit dwellings and 2,100 are multiple unit dwellings.

Figure 2: Core Neighbourhood Home Ownership, 1996-2006



Source: 2007 Neighbourhood Profiles. 8th Edition. 2003 Neighbourhood Profiles. 7th Edition.

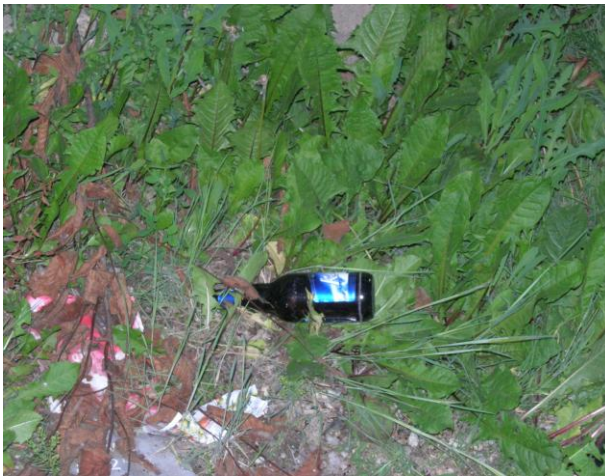
According to the Saskatoon Neighbourhood Profiles data, the percentage of owner-occupied homes in Nutana increased 20.1 percent, from 1,415 units in 1996 to 1,700 units in 2006. Renter-occupied housing decreased by 15.8 percent in the same time period, falling from 1,925 units to 1,620 units in Nutana.

Nutana is a mature neighbourhood with diverse and architecturally pleasing housing stock. Residents of the Nutana neighbourhood include student renters, young families and families who have lived in the area for generations. Since Nutana is in close proximity to the University of Saskatchewan, renter-occupied housing is a large majority of the housing stock in the neighbourhood. This vibrant neighbourhood values and celebrates the unique and multi-generational community.

4.2 CRIME ACTIVITY PROFILE

During the Nutana Local Area Planning process, the issue of safety was identified as a concern for Nutana residents and needed to be addressed in the neighbourhood. Residents expressed concerns that ranged from an increase in crimes such as break and enter, and liquor and drug offences to the annoyances of incivilities that reduce the value and utility people should properly expect to enjoy at their home and in the surrounding area (LAP: 2001:47). The residents also identified three sets of community interaction that were responsible for the area’s safety concerns:

- Use conflicts between a user group of mainly young people who “hang out” at various locations on and near the street and a user group of business people, staff, residents and clients. Panhandling, loitering, and aggressive behaviour conflicts with the shopping, working and visiting behaviour of other Broadway users; (LAP: 2001:49)
- Use conflicts between a user group that uses private property in the area to congregate and use alcohol and drugs illegally with a user group of residents who live immediately adjacent to the area and the property owner; (LAP: 2001:49)
- Use conflict between some late night users of the area who engage in rowdy behaviour and wilful damage, and residents and business users in adjacent areas (LAP: 2001:49).



Above: Indication of illegitimate activity occurring in areas of the Nutana neighbourhood.

Table 1 shows selected crime incidents for the Nutana neighbourhood. The table presents statistics that specify what type of criminal activity occurred in the area and also illustrates the general direction of crime trends over recent years (increasing or decreasing). The last column in the table exemplifies the percentage change for the crime incidents that have occurred between 2001 and 2008.

Table 1: Nutana Selected Crime Incidents, By Type 2001 to 2008

Nutana Selected Crime Incidents, By Type 2001 to 2008

Description	2001	2003	2005	2007	2008	% Change '01-'08
Violations Causing Death	0	0	1	0	0	0.0%
Sexual Assault	5	2	1	4	3	-40.0%
Assault	62	49	50	58	59	-4.8%
Deprivation of Freedom – Kidnapping	0	0	0	1	0	0.0%
Violence or Threat – Robbery	20	19	20	19	11	-45.0%
Violence or Threat – Criminal Harassment	6	3	6	7	10	66.7%
Violence or Threat – Utter Threats to Person	8	11	16	10	13	62.5%
Crimes Against the Person	101	84	94	99	86	-14.9%
Break and Enter - Residential	77	109	53	51	29	-62.3%
Break and Enter - Business	37	38	19	7	23	-37.8%
Break and Enter - Other	13	27	26	15	12	-7.7%
Break and Enter - Total	127	174	98	73	64	-49.6%
Arson	5	7	3	3	5	0.0%
Theft Over \$5000	9	25	11	16	7	-22.2%
Theft Under \$5000	294	419	280	229	183	-37.8%
Possession of Stolen Goods	14	17	13	8	8	-42.9%
Fraud	23	13	24	21	16	-30.4%
Mischief	149	188	166	171	120	-19.5%
Crimes Against Property	494	669	497	448	336	-32.0%

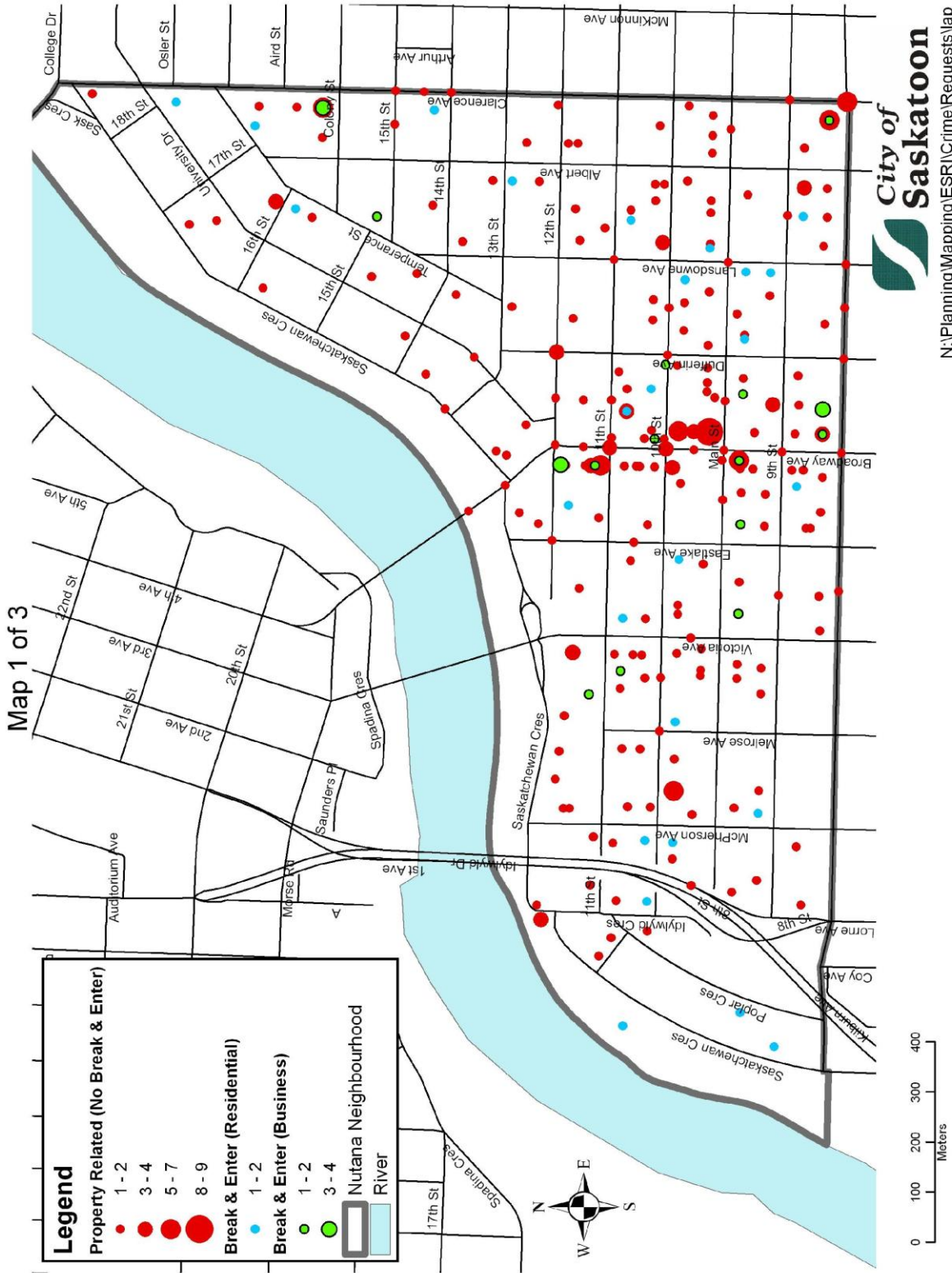
Source: Saskatoon Police Service

According to the Saskatoon Police Service’s 2008 Incident Counts, the total number of crimes against people has decreased in the Nutana neighbourhood since 2001, from 101 incidents to 86 incidents. The number of break and enters have also decreased from 127 incidents in 2001 to 64 incidents in 2008; a decrease of 49.6 percent. The total number of property crimes has also decreased from 494 incidents in 2001 to 336 incidents in 2008; a decrease of 32.0 percent.

Below are three maps of the Nutana neighbourhood illustrating the number of crime incidents dispersed throughout. Map 1 of 3 shows Property, Break and Enters (Business and Residential) Related Crime Incidents for 2008. Map 2 of 3 shows Drug and Alcohol Related Crime Incidents for 2008 and Map 3 of 3 illustrates Violent and Assault Related Crime Incidents for 2008. The maps appear to show that a large concentration of the crime related incidents have occurred along the Broadway Avenue corridor.

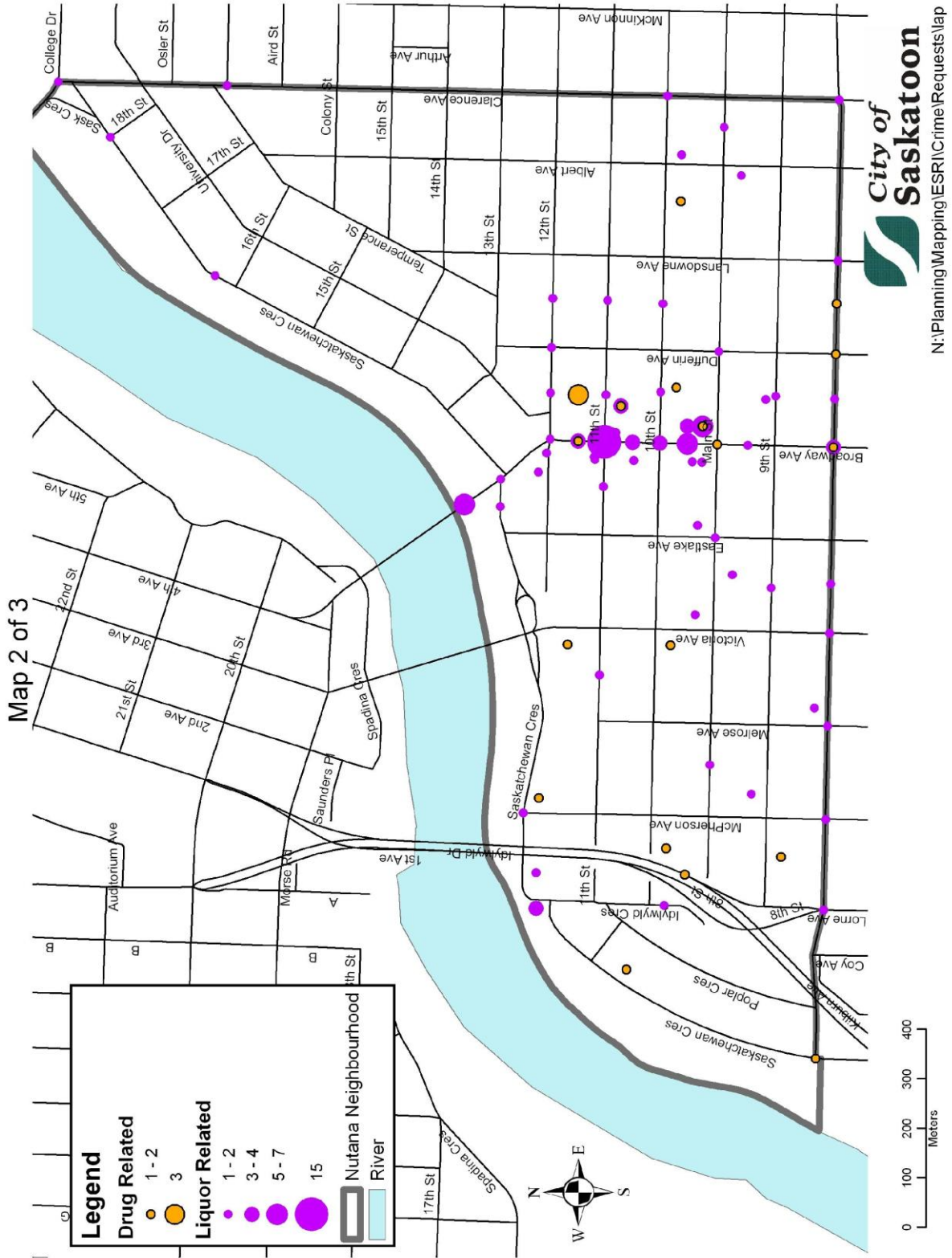
Map 1 of 1: Property, Break and Enter (Business), Break and Enter (Residential) Related Crime Incidents for 2008

Nutana - Selected Crime Incidents for 2008



Map 2 of 3: Drug and Alcohol Related Crime Incidents for 2008

Nutana - Selected Crime Incidents for 2008



Map 3 of 3: Violent and Assault Related Crime Incidents for 2008

Nutana - Selected Crime Incidents for 2008

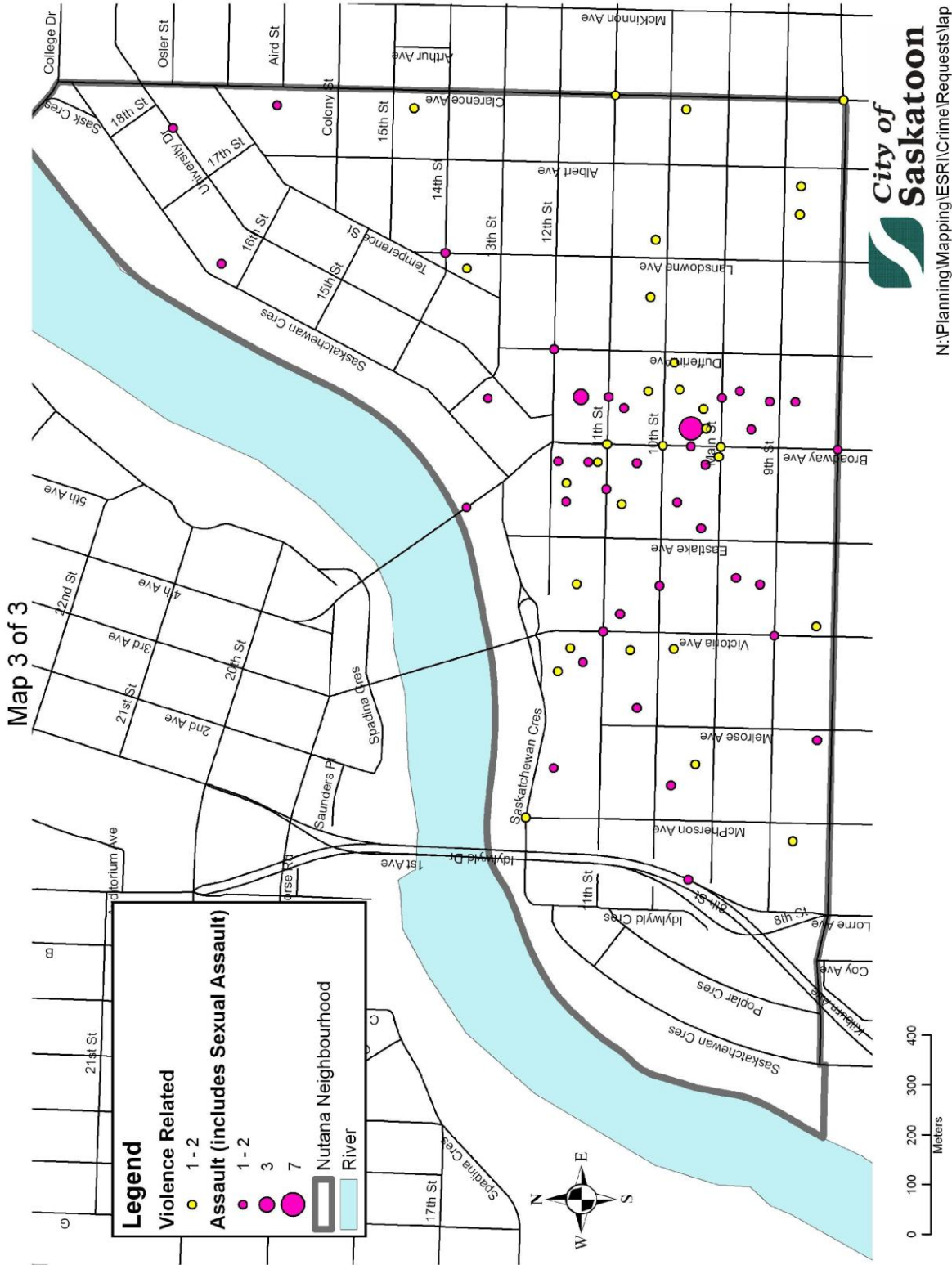


Table 2 compares the selected crime incidents, per 1000 population of the Nutana neighbourhood to other neighbourhoods in the city, and to the City of Saskatoon as a whole. Information from Police Services identifies a lower incidence of crime per 1000 people in Nutana compared to King George. However, when compared to the City as a whole and the Sutherland neighbourhood, Nutana has a slightly higher rate of crime for these selected crimes.

Table 2: 2007 Rate of Selected Crime Incidents, Per 1000 Population

2007 Rate of Selected Crime Incidents, Per 1000 Population

Description	Saskatoon	Nutana	King George	Sutherland
Total Crimes Against the Person	20.80	14.61	51.39	17.32
Total Break and Enter	10.04	10.78	23.55	6.47
Total Crimes Against Property	62.99	66.14	108.67	54.83

Source: Saskatoon Police Service

While statistics provide important clues to understanding crime activity in Nutana, they are only one piece of the puzzle. Residents' perceptions of their safety in the community help to complete the picture, and must be regarded as at least as important as actual (or recorded) incidences of crime. Many incidents of crime are not actually reported to the police, meaning that a certain portion of criminal activity is known only to those directly involved or those connected to the incident through informal lines of communication. Furthermore, every crime incident has a context that helps to explain its relative importance and/or impact on the community. This context is best understood and related by community members.

5.0 The Nutana Safety Audit

5.1 PROJECT SUMMARY

The Nutana Local Area Plan (LAP) included recommendations to assist in improving safety for local residents, property owners and business owners, as well as other Nutana stakeholders.

In November 2004, representatives of the City of Saskatoon Planning and Development Branch (formerly the City Planning Branch) Neighbourhood Safety met with the Nutana Community Association to confirm their interest in the implementation of the neighbourhood safety recommendations of the Nutana LAP. As a result, the Nutana Safety Subcommittee was established to work in partnership with the City of Saskatoon to complete the neighbourhood safety recommendations from the LAP.

The initial Safety Subcommittee meeting was held in April 2005 to discuss the project and to identify additional local stakeholders that should be involved.

Following the initial Safety Subcommittee meeting, flyers were sent to all neighbourhood residents, property owners and other stakeholders inviting everyone to attend a Community-Wide Neighbourhood Safety meeting. In an attempt to gain a better understanding of the existing concerns and issues of Nutana residents and local business owners, the Nutana Community Association and the Neighbourhood Safety Subcommittee hosted a meeting in June 2005, with 21 people in attendance. The overall purpose of the meeting was to provide background on Neighbourhood Safety and CPTED and to solicit information from the community on the safety issues throughout the Nutana neighbourhood.



Above: Community members taking part in the Community-Wide Neighbourhood Safety meeting.

Attendees of the meeting participated in a Perceptions of Safety Exercise. One of the main goals of the exercise was to specifically identify areas and sites in the neighbourhood where participants felt *safe* or *unsafe*. Participants were asked to identify on a map of the Nutana neighbourhood where they felt *safe* or *unsafe* and to indicate why they felt this way. This activity outlined residents' perceptions of their safety which was combined with an analysis of the neighbourhood crime statistics to help determine an action plan for the neighbourhood. Appendix 8.1 illustrates perceived *safe* and *unsafe* sites in the neighbourhood.

In September 2005, the Safety Subcommittee reviewed the results from the Perception of Safety Exercise and the Safety Survey that was completed at the Nutana community-wide safety meeting. This identified the areas and sites where community members felt unsafe. The Safety Subcommittee also reviewed the selected Crime Statistic Maps (refer to pages 12, 13 and 14 for Nutana Crime Incident Maps) and discussed any discrepancies that appeared. Finally, the subcommittee prioritized the perceived unsafe areas from highest to lowest in the Broadway Area, and identified the perceived unsafe sites in the Broadway Area (Appendix 8.2).

In summary, the Safety Subcommittee identified the areas around Lydia's Pub, the Hose and Hydrant Pub, and the convenience store on Broadway Avenue, as well as the lanes adjacent to the commercial district, particularly in the evening, as the highest perceived unsafe areas. The highest perceived unsafe sites identified were the convenience store on Broadway Avenue and underneath the Broadway Bridge in Cosmopolitan Park.

Perceptions of safety were considered to be as important as the crime statistics. Therefore, areas of concern identified by participants were considered regardless of the number of reported crimes in the area. In addition, areas with a high number of incidents, but that were not identified by the community as areas of concern were also studied in greater detail to ensure neighbourhood residents were not putting themselves at risk in areas they perceived as safe.

In November 2005, a CPTED workshop was organized by the City of Saskatoon Neighbourhood Safety Program. The purpose of the workshop was to develop an educated group, within the neighbourhood, who understood the principles of CPTED and how they can be applied to reduce opportunities for crime in Nutana, while improving perceptions of safety for all local stakeholders.



Above Left: Attendees at the CPTED Workshop participating in group activities to apply the principles of CPTED.
Above Right: Community members listen to a presentation at the CPTED Workshop.

Combining all the previous information and priorities a Neighbourhood Safety Action Plan was developed for Nutana. The Safety Subcommittee met in January 2006 to review the draft Nutana Safety Action Plan (Appendix 8.3) that would guide the neighbourhood safety process over the next several months. The action plan included all of the activities the Safety Subcommittee wanted to accomplish prior to the Safety Audit Final Report.

Conducting a Neighbour-to-Neighbour Survey had also been discussed on numerous occasions with the Safety Subcommittee. As a result, a draft Neighbour-to-Neighbour survey was developed and approved by the subcommittee at the January 2006 meeting. The survey was conducted to gain additional information on and from areas of the neighbourhood that the subcommittee was convinced had been experiencing problems. More information on the Neighbour-to-Neighbour Survey can be found in Section 5.2.

5.2 NEIGHBOUR TO NEIGHBOUR SURVEY

A survey of residents in areas prioritized by the Nutana Safety Subcommittee was conducted to record the opinions and perceptions of people living in close proximity. Cosmopolitan Park and the area east of Broadway Avenue, between Main Street and 11th Street were two areas in which the survey was performed. The community members themselves collected the information and was then collated and summarized by the Neighbourhood Safety staff.

Local stakeholders identified Cosmopolitan Park and the area east of Broadway Avenue (between Main Street and 11th Street) as possibly having some safety-related issues that required additional feedback and information from neighbourhood residents. Residents living adjacent to the park and within the east area of Broadway Avenue were asked to participate in the survey (Appendix 8.4). The Safety Subcommittee identified these particular residents as having a unique view/perception of what happens in this part of the neighbourhood by virtue of their proximity to the area. The following is a summary of the responses, based on the location as to where the survey was conducted:

Neighbour Survey: Cosmopolitan Park

March 2 – 15, 2006

Participants: 12

Average Age Range of Participants: Between 40 to 59 years

- The majority of respondents indicated they do not feel safe walking within the area at night; most feel safe walking through the park during the day and in the early evening.
- Residents have noticed illegal drug use/trafficking and groups of youth drinking.
- Most respondents experienced an incident of crime in the area, including break and enters.

This information was consistent with the safety audit results of the area and the evidence found on the site.

Neighbour Survey: East of Broadway Avenue (between Main and 11th Street)

April 10 – May 20, 2006

Participants: 17

Average Age Range of Participants: Between 50 to 59 years

- The majority of respondents feel safe walking in the area at all times of the day.
- Most respondents have notice people drinking in public places, vandalism to vehicles and drug trafficking.
- Several residents indicated they themselves and close friends have been victims of break and enters in the area.
- Residents noted there is a lot of noise, litter and graffiti vandalism around the area and the bars adjacent to the residential often tend to be the source of the problems.

No further action was taken in this area. However, it does indicate that the impact of nuisance behaviour and the liquor license establishments extends into this area.

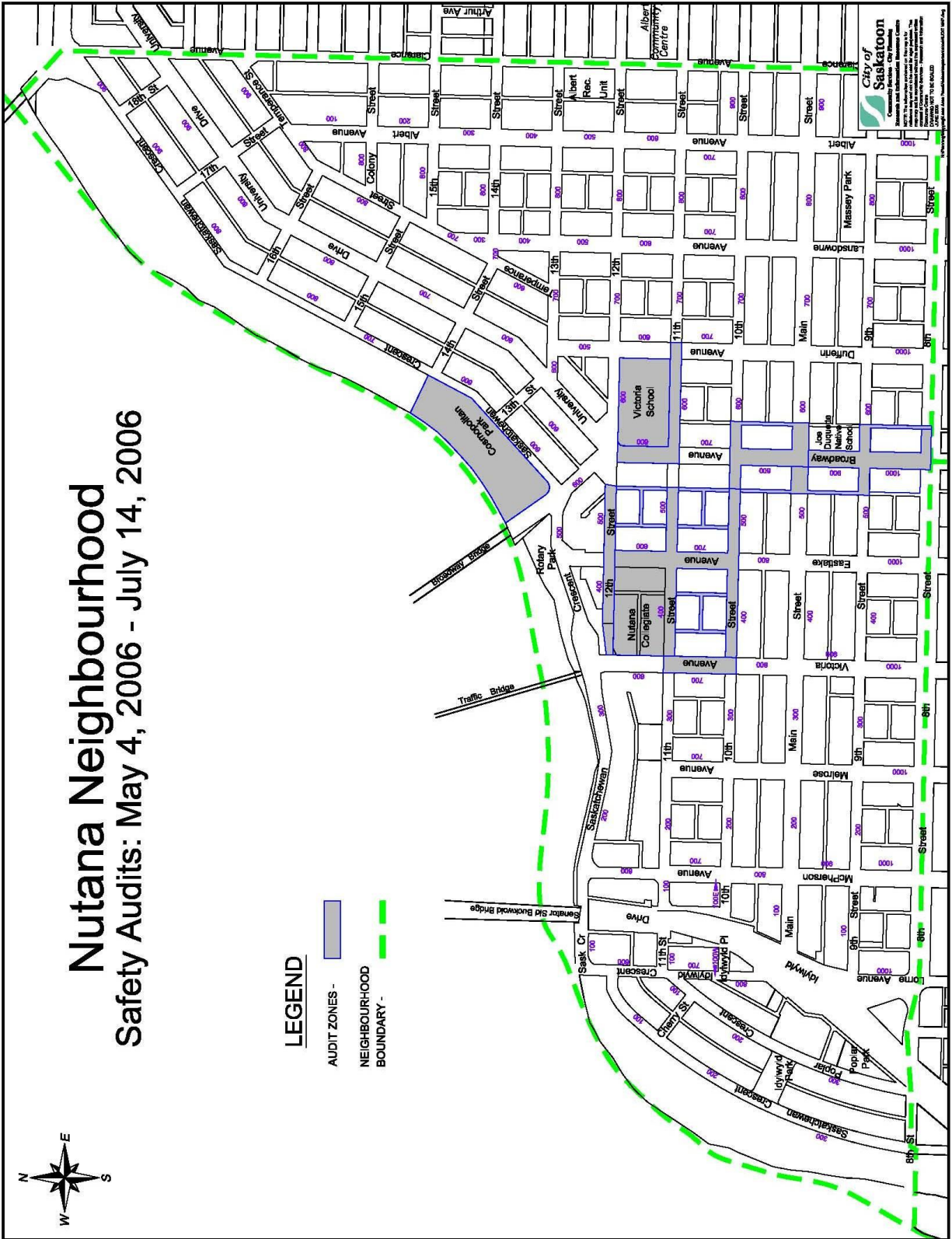
5.3 PRIORITIZED AREAS OF CONCERN

From the information gathered from the Community Safety meeting, the Safety Subcommittee considered their prioritized list of sites and decided to conduct a number of Safety Audits, with the assistance of the City of Saskatoon Administration, to make first-hand observations of each area of concern.

Safety Audits were conducted on the following areas:

- Cosmopolitan Park, between Broadway Bridge and 14th Street;
- Westside of the 800 and 900 blocks of Broadway Avenue;
- Victoria Ave., Broadway Ave., 10th and 11th Street, and Victoria School; and
- 800 and 1000 blocks of Broadway Avenue.

Map 4: Nutana Safety Audit Map



5.4 SAFETY AUDITS

All members of the Nutana Community, Nutana Community Association and Nutana Safety Subcommittee were invited to participate in a series of Safety Audits. A flyer was distributed throughout the Nutana neighbourhood notifying residents, property and business owners of the upcoming Safety Audits. City of Saskatoon Administration, such as representatives from the Parks Branch, Saskatoon Light and Power and the Saskatoon Police Service were also invited to provide their expertise.

NUTANA

Neighbourhood Safety – Upcoming Safety Audit

The **Nutana Community Association Neighbourhood Safety Subcommittee** and the **City of Saskatoon** invite you to participate in upcoming Safety Audit walk-abouts.

The Nutana Local Area Plan (LAP), which was approved by City Council on September 24, 2001, identified recommendations to assist Nutana residents, property and business owners, and others in improving the safety of the Broadway Avenue area. The **Nutana Community Association Neighbourhood Safety Subcommittee** and the **City of Saskatoon** have been working together since April 2005 to address the Neighbourhood Safety recommendations of the Nutana LAP.

Local stakeholders have identified areas of concern in the Broadway area. The **Safety Subcommittee** prioritized specific neighbourhood locations and has been conducting Safety Audits with the following walk-abouts remaining in the Broadway area:

Saturday, June 10, 2006 – 8:00 - 11:00 pm

Audit area: East-side of the 800 and 1000 Blocks of Broadway Avenue, between 8th and 10th Streets

Meet at Grace-Westminster United Church – Lounge – 505 10th Street East

Friday, June 16, 2006 – 9:00 - midnight

Audit area: Cosmopolitan Park, between Broadway Bridge and 14th Street

Meet in Cosmopolitan Park at Saskatchewan Crescent and Broadway Bridge (across from 602 Saskatchewan Crescent)

Friday, June 23, 2006 – 8:00 - 11:00 pm

Audit area: West-side of the 800 and 900 Blocks of Broadway Avenue, between 9th and 10th Streets

Meet at Grace-Westminster United Church – Lounge – 505 10th Street East

Tuesday, June 27, 2006 – 7:00 - 9:30 pm

Audit area: Victoria to Broadway Avenues and 10th to 11th Streets and Victoria School grounds


Meet at Nutana Collegiate Library – 411 11th Street East

A Safety Audit is a thorough examination of an area by local residents. Residents walk through the area and identify specific safety concerns, opportunities for crime to occur, and existing perceptions of safety. Ultimately, the goal of a Safety Audit is to reduce the opportunity for crime to occur and improve the perceptions of safety in the area.

Everyone is welcome and encouraged to participate in this safety project and to **join the Nutana Safety Subcommittee**.

Your input is important in keeping Nutana a safe place to live, work and play!

*** Please RSVP if you are interested in participating in any of the Safety Audits.**



City of
Saskatoon

For more information or to join the Nutana Safety Subcommittee, contact:

City Planning Branch – Neighbourhood Safety Program

Elisabeth Miller – 975-7666

e-mail: elisabeth.miller@saskatoon.ca

or Mark Emmons – 975-2288

e-mail: mark.emmons@saskatoon.ca

A brief overview of the Neighbourhood Safety Project and Safety Audit Survey Form (Appendix 8.5) was discussed prior to beginning each of the audits. Following each Safety Audit, all participants and facilitators returned to a designated meeting location to complete their Safety Audit survey form and debrief. The results of the surveys were then compiled and analyzed.

The following Sections summarize the results of the Nutana Safety Audits and highlight the concerns noted by participants. Each audit followed a previously-agreed upon map of the areas. These maps indicated specific locations with letters to help guide the safety audit participants. Each Safety Audit Map is included within each audit section.

5.4.1 Nutana Collegiate and East Area

Date & Time: Thursday, May 4, 2006 at 7:00 p.m. to 9:30 p.m.



The Nutana Collegiate grounds have a chain link fence surrounding the area, with few entrances. Located in the north-west corner of the school site is a staff parking lot which is also fenced. Safety Audit participants generally felt safe in the school grounds, however they noted there were several potential hiding spots for offenders and only two entrance/exit points within the fence surrounding the open park space. These spaces created the opportunity for the area to become an entrapment zone.

The fence surrounding Nutana Collegiate has very few exits which makes it a potential entrapment zone.

Right: One of the few entrance/exit points within the fence surrounding Nutana Collegiate.

Below: A view of Nutana Collegiate from Eastlake Avenue and 12th Street.



During the Safety Audit, potential hiding places and entrapment zones were noted behind Nutana Collegiate.

Left: Recessed spaces around the school created alcoves, making it difficult to maintain clear sightlines.

Below: A shed adjacent to the school was unintentionally placed in such a way that hiding places were created.




During the Safety Audit east of the school grounds, participants noted that graffiti vandalism within the lanes needed to be addressed and regular garbage pick by local business owners could improve the image. The suggestion was made to encourage artwork in the lanes to deter the graffiti vandalism, while at the same time, creating a more enjoyable walk through.

At the time of this publication, Nutana Collegiate was undergoing a preliminary design review of their school grounds, in conjunction with the City of Saskatoon Parks Branch and Community Development Branch. Proposed development plans for the school grounds include improved sport fields, a children's playground, space for a community garden, an in-ground irrigation

system, and park benches, along with added trees and shrubs. To identify possible issues or problems and help determine what CPTED strategies or principles would apply, the redevelopment plans have been reviewed by the CPTED Review Committee. The concerns brought forward by the Nutana Safety Subcommittee have been integrated into this review.

The following is a summary of the participants' areas of concern noted during the Safety Audit:

Hiding Places	Potential hiding places were noted behind Nutana Collegiate. Recessed doorways and alcoves around the staff parking lot were present during the Safety Audit. Participants indicated these areas as possible entrapment zones.
Property Maintenance	Graffiti vandalism and unkempt properties were apparent during this particular Safety Audit. The majority of the vandalism and poor property maintenance appeared to be in the lanes, on walls, doors and on garbage cans. The lanes gave the impression the adjacent properties were uncared for. Regular maintenance, including quick removal of graffiti vandalism can discourage illegitimate users and promote a positive image. 
Access Control	Nutana Collegiate school grounds have only two entrance/exit points in the chain-link fence that surrounds it. Participants indicated that the area could be a possible entrapment zone. It was also difficult to distinguish where the openings were on the grounds if a victim needed to escape.

5.4.2 Cosmopolitan Park, between Broadway Bridge and 14th Street

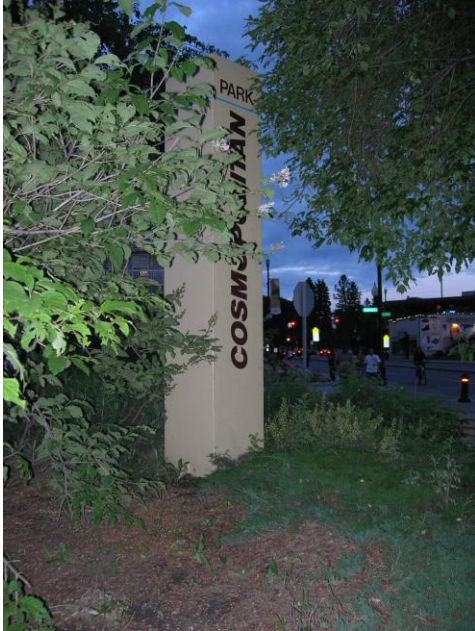
Date & Time: Friday, June 16, 2006 at 9:00 p.m. to midnight



Cosmopolitan Park is located along the South Saskatchewan River across from the Kiwanis Memorial Park. The park is a naturalized area featuring two levels of the Meewasin Trail. The lower Meewasin Trail is adjacent to the South Saskatchewan River and is a rugged mulch pathway that follows the contours of the riverbank. The upper Meewasin Trail is paved with several benches located throughout.

The Safety Audit of Cosmopolitan Park was conducted on the upper Meewasin Trail, beginning at A, near the Broadway Bridge (shown on the above map) and along the promenade adjacent to Saskatchewan Crescent. The audit group followed the previously-agreed upon map of the area, briefly stopping at specific locations to discuss perceptions of safety and individual findings.

During the Safety Audit, participants acknowledged that they felt safe in the park in the daytime; however, they were quite adamant that they would not enter the park alone in the evening since lighting was perceived to be poor and many entrapment zones were apparent. Bushes, shrubs and trees line the majority of the upper Meewasin Trail. The trail includes a mowed buffer zone on either side of the paved pathway, where the foliage is cut back a few meters from the pathway. For such a naturalized area, the cleared area adjacent to the upper Meewasin Trail gives users fairly clear sightlines. However, some concern was expressed about the promenade along Saskatchewan Crescent regarding the overgrown trees and bushes that obstruct user's view along the pathway. There were discussions around how trimming the vegetation along the promenade would assist in maintaining clear sightlines and natural surveillance of the area.



Left: Signage within the Cosmopolitan Park is often obscured by overgrown trees and shrubs, making it difficult to clearly read.

Right: The upper Meewasin Trail travels through a heavy naturalized area with overgrown trees and shrubs.



There was discussion on whether people should even be on the Meewasin Trail at night. The consensus was that users should take some responsibility for their own safety and not put themselves at risk. Reminding users that there are alternate pathways would give them a safer choice after dark. Participants also indicated that better signage, including the park layout and a description of the amenities on the upper Meewasin Trail, would be helpful to users and provide a better understanding of the park.

The area underneath the Broadway Bridge in Cosmopolitan Park was identified as a safety concern among participants during the Safety Audit. It was noted the walls and pillars of the Bridge are often covered with graffiti vandalism, and there is a lack of lighting immediately beneath the bridge. The graffiti vandalism on the Broadway Bridge is removed as quickly as possible, by City of Saskatoon Administration once it has been reported to the City of Saskatoon Graffiti Management Program



Above: Under the Broadway Bridge, minimal low-level sodium lighting is used to illuminate the area in the evening.



Above: Examples of the Broadway Bridge victimized by graffiti vandalism.

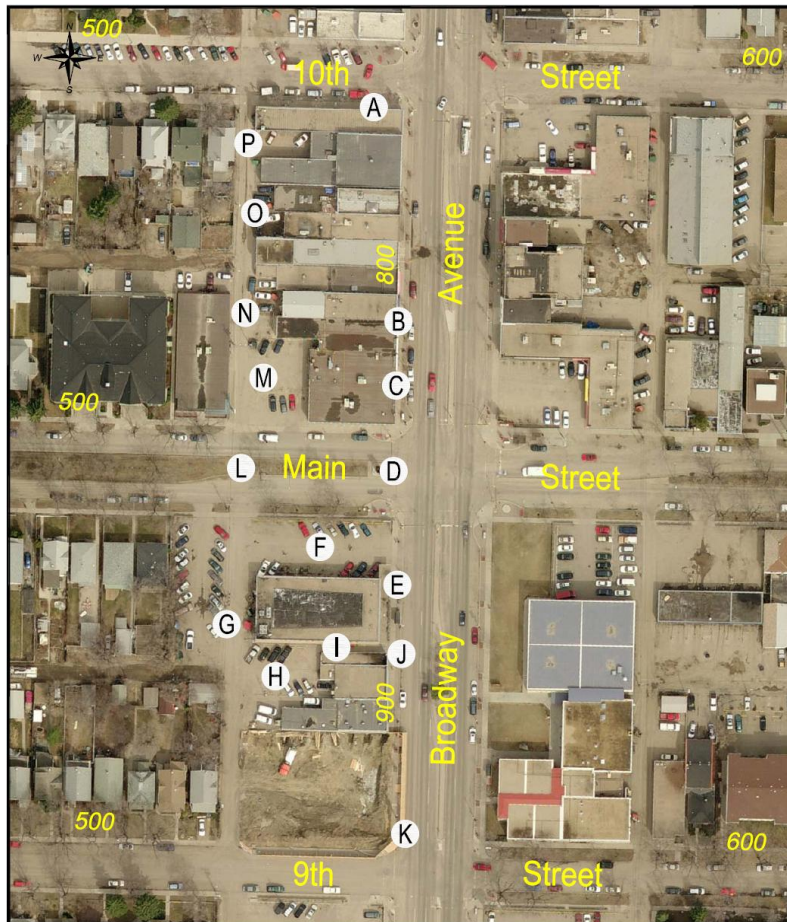
Since the Cosmopolitan Park Safety Audit, Saskatoon Light & Power has performed calculations to determine whether the lighting levels along Saskatchewan Crescent East meet the Illuminating Engineering Society Guidelines. It has been determined they do not meet, and suggest that each light pole along the street be replaced to meet these guidelines. Recommendation 7.1.2 addresses raising the illumination to an acceptable level along Saskatchewan Crescent East.

The following is a summary of the participants’ areas of concern noted during the Safety Audit:

<p>Lighting</p>	<p>The general impression of the lighting within the park was poor. The group indicated the lighting was not even along Saskatchewan Crescent East, especially the paved paths and around sitting areas. Creating well-lit areas can act as a deterrent for undesirable behaviour because of the increase in natural surveillance. Lighting is not recommended for the upper Meewasin Trail due to its naturalized state and users should choose alternative routes after dark so that they don’t put themselves at risk.</p>
<p>Sightlines</p>	<p>Clear sightlines within the park are sometimes difficult to define. The shrubs, trees and bushes within close proximity to the promenade along Saskatchewan Crescent made it difficult to clearly see what was up ahead. Regular maintenance of the mature shrubbery and bushes along the promenade adjacent to Saskatchewan Crescent could provide users clearer sightlines. On the other hand, the upper Meewasin Trail includes the mowed buffer zone on either side, making it easier to have clearer sightlines while still maintaining a more naturalized feeling to the path.</p>
<p>Signage</p>	<p>The signage within Cosmopolitan Park was described as unsatisfactory among the audit group. The park signage was difficult to see because of the overgrown shrubs and bushes. The majority of the group noted there was no nearby emergency assistance signage, something that could be helpful if assistance was required. Signage is a great way to help people define the space they are using and identify where they are.</p>



5.4.3 Westside of the 800 and 900 Blocks of Broadway Avenue
Date & Time: Friday, June 23, 2006 at 8:00 p.m. to 9:30 p.m.

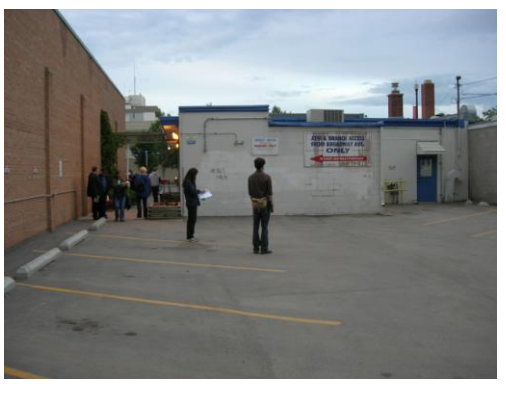


The Westside of the 800 and 900 blocks of Broadway Avenue consist of many local commercial and retail businesses. This area tends to have constant activity during all hours of the day. The participants in the Safety Audit indicated the majority of the blocks were well-maintained and the overall design of the neighbourhood was good. However, it is important to note that entrapment zones and graffiti vandalism on garbage bins in the lanes were seen as a significant negative impact on area users.



Above Left: A mix of local commercial and retail businesses on Broadway Avenue.
Above Right: Graffiti vandalism on garbage bins in a lane adjacent to Broadway Avenue.

The following is a summary of the participants' areas of concern noted during the Safety Audit:

Entrapment Zones	<p>The lanes behind the Westside of the 800 and 900 blocks of Broadway include potential entrapment zones. Participants indicated there were possible entrapment zones behind or between garbage bins in the lanes, in recessed doorways, and at the rear of the buildings.</p>	
Graffiti Vandalism	<p>Graffiti vandalism was visible in the lanes, on walls and doors of commercial buildings and on garbage bins. It is interesting to note that there is no graffiti vandalism on any of the public art in the area.</p>	

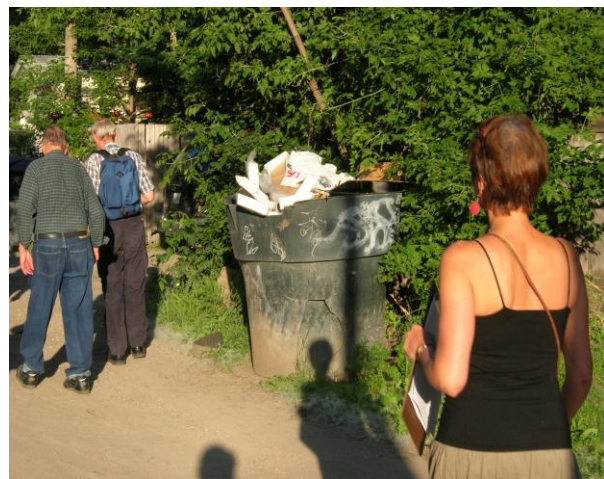
5.4.4 Victoria Ave., Broadway Ave., 10th & 11th Street, and Victoria School
Date & Time: Tuesday, June 27, 2006 at 7:00 p.m. to 9:00 p.m.



This Safety Audit area includes residential, commercial, retail, and institutional uses. With local businesses located adjacent to residential properties, conflict has occurred between the late night traffic and pedestrian flows and neighbourhood residents. Participants indicated that the traffic and parking on the residential streets in this area has become a nuisance to home owners because of the visitor demographics that exist in the neighbourhood. Nutana is a vibrant neighbourhood during both day and night. It attracts visitors from well beyond the Nutana neighbourhood borders. The Broadway Avenue area includes a cluster of local establishments with liquor permits and is known for its lively night-life. Noise and nuisance concerns were identified with regards to these establishments and their patrons, and the proximity to the residential area. The conflict typically arises when these businesses close, at around 2:00 a.m., and their patrons spill into the residential areas where people are already asleep.

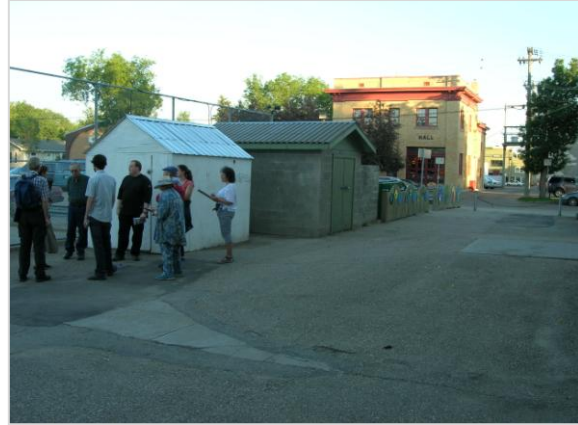


The Safety Audit of the area also brought up maintenance concerns and high speed vehicular traffic in the lanes adjacent to Broadway Avenue. There appeared to be many unmaintained yards and a significant amount of graffiti vandalism on the large garbage containers behind the commercial businesses and on private property throughout the area. During the Safety Audit, participants indicated there were areas that were under-maintained, giving a less-than-desirable image to users. Vehicular traffic in the lanes was identified as a hazard to pedestrians using the sidewalks or sharing the lane with vehicles. Vehicles tended to use the lanes as thorough-fares and an alternative to Broadway Avenue, at speeds that did not accommodate a shared use with pedestrians. Participants indicated they would like to see improvement in these areas of the neighbourhood since the pedestrian activity in the neighbourhood is high and there is both an elementary and two high schools in the area.



Above: Examples of graffiti vandalism found in one of the lanes travelled through during the Safety Audit. These examples show graffiti vandalism on private property and large public garbage bins.


Victoria School is located on the northeast corner of Broadway Avenue and 12th Street. The school grounds currently have a chain-link fence surrounding the rear of the school yard and a large open space fronting Broadway Avenue. Participants indicated they generally felt safe around the school grounds; however they identified the front entrance area of the school as having poor sightlines and lighting, and the rear of the school to have potential places where people could hide.



Above: School grounds around Victoria School.

At the time of this publication, Victoria School was undergoing a preliminary design review of their school grounds, in conjunction with the City of Saskatoon Parks Branch and Community Development Branch. Proposed development plans for the school grounds include improved multi-purpose sport fields, a small hill, a pathway connecting 12th Street and 11th Street entrances, park benches and several plantings of trees and shrubs. To identify possible issues or problems and help determine what CPTED strategies or principles would apply, the redevelopment plans have been reviewed by the CPTED Review Committee. The concerns brought forward by the Nutana Safety Subcommittee have been integrated into this review.

The following is a summary of the participants' areas of concern noted during the Safety Audit:

Conflicting User Groups	The commercial area in the Nutana neighbourhood is located directly adjacent to residential properties. Concerns were raised regarding conflict between the late night traffic and pedestrian flows and neighbourhood residents. Participants also indicated that the traffic and parking on the adjacent residential streets has become a nuisance to residents.
Traffic	Vehicular traffic in lanes was identified as a hazard to pedestrians using or sharing the lane, especially where sidewalks intersect the lanes. It appeared that vehicles tended to use the lanes as through-fares and as an alternative to Broadway Avenue at speeds that did not accommodate pedestrians.
Hiding Places	Potential hiding places there noted behind Victoria School. Recessed doorways and alcoves around the school grounds were identified during the Safety Audit. 

5.4.5 800 and 1000 Blocks of Broadway Avenue

Date & Time: Friday, July 14, 2006 at 9:00 p.m. to 11:00 p.m.



This audit area consists of commercial, retail, institutional and residential uses. It is a highly travelled area by both pedestrians and vehicular traffic. The Safety Audit group indicated that the area typically tends to be well utilized during all hours of the day. Comments were also made on the maintenance and upkeep of sites of local businesses. It appeared that the majority of these businesses took ownership of the lanes with the usage of signage and general preservation of the buildings. One of the matters mentioned during the Safety Audit was concerns surrounding the patrons leaving or loitering around local bars, taverns and the local convenience store on the corner of Main Street and Broadway Avenue. Residents believe that liquor permit businesses should take a pro-active approach to reducing the inappropriate activity occurring outside their establishments.

6.0 Significant Findings and Recommendations

6.1 NATURAL SURVEILLANCE

Natural Surveillance refers to what can naturally or easily be seen within a line of sight. It also refers to the ability of people to see and be seen. Any element of design that increases the chance that a potential offender will be seen, or at the very least think that they may be seen, is a form of natural surveillance. Common strategies to improve natural surveillance include window placement, lighting improvements and removal of obstructions.

6.1.1 COSMOPOLITAN PARK FOLIAGE:

Finding:	Overgrown trees and bushes in the area, particularly on the pathway adjacent to Saskatchewan Crescent, restrict the ability for users to maintain clear sightlines, observe signage and limit the natural surveillance from adjacent residences’.
Recommendation:	That the Parks Branch, Infrastructure Services Department trim overgrown trees and bushes along the 600 and 700 blocks of Saskatchewan Crescent East, to increase natural surveillance, sightlines and help reduce hiding places in the area.
Justification:	The ability to see and be seen greatly enhances personal perceptions of safety. In addition, if illegitimate users cannot find hiding places or feel that they are being watched, they may choose to go elsewhere which reduces undesirable behaviour in this area.



Left: Overgrown trees and bushes in Cosmopolitan Park invade the pathway adjacent to Saskatchewan Crescent.

6.1.2 SASKATCHEWAN CRESCENT EAST LIGHTING:

<p>Finding:</p>	<p>Cosmopolitan Park is a highly naturalized area with street lighting that, according to Saskatoon Light & Power, does not meet the Illuminating Engineering Society Guidelines along Saskatchewan Crescent East. The street lighting fixtures appear to be from the 1970s and are a very inefficient fixture that wastes quite a bit of light.</p>
<p>Recommendation:</p>	<p>That Saskatoon Light & Power review the feasibility of replacing the existing street lighting on the 600 to 900 blocks of Saskatchewan Crescent East in 2010, under the existing Street Lighting Upgrade Capital Budget program.</p>
<p>Justification:</p>	<p>Raising the illumination to an acceptable level in areas that are surrounded by trees and bushes and often used by pedestrians for walking, running and biking can act as a deterrent to undesirable activity by creating an unwelcome feeling of surveillance and increasing the ability for others to see area users. This could also be a safer alternative, at night, than the upper Meewasin trail between the Broadway and the University bridges.</p>



Left: Promenade along Saskatchewan Crescent deficient in pedestrian-level lighting.
Below: Seating area along Saskatchewan Crescent without any type of lighting in close proximity.



6.1.3 ELIMINATE HIDING PLACES:

Finding:	Areas in the neighbourhood were identified to have potential hiding places for illegitimate use. For instance, garbage bins in the lanes are placed in such a way that hiding places have been created or areas not easily visible.
Recommendation:	That the Planning and Development Branch, Community Services Department develop a Safety Fact Sheet on eliminating hiding places behind garbage containers in lanes, and alcoves in front and behind the local businesses on Broadway Avenue and that the Broadway Business Improvement District distribute it to their members.
Justification:	Reducing hiding places in the area will enhance the perception of safety, while also reducing the opportunity for people to loiter unnoticed in the areas.

6.1.4 LANE TREE/BUSH TRIMMING:

Finding:	Lanes are often utilized by pedestrians and cyclists in the residential and commercial areas of Nutana. However, many had limited natural surveillance due to mature trees and bushes that spill out from the private lots and the volunteer growth that encroaches on the lane right-of-way.
Recommendation:	That the Municipal Engineering Branch, Infrastructure Services Department bring forward a capital budget proposal to remove all volunteer trees and bushes and trim overhanging foliage in the lanes between Dufferin Avenue and Eastlake Avenue and between 8th Street and 12th Street and meet with the Planning and Development Branch, Community Services Department to develop general public guidelines on the importance of maintaining an appropriate level of lane maintenance that will reduce the opportunity for crime to occur.
Justification:	The ability to see and be seen greatly enhances personal perceptions of safety. If illegitimate users cannot find a hiding place, they may choose to go elsewhere, which reduces undesirable behaviour in the area.



6.2 ACCESS CONTROL

Access control is an element of territoriality. It includes the creation of access points, exits and gateways to a particular area in such a way as to encourage legitimate users of the area to take ownership of it. Access control may help discourage illegitimate users from inappropriate behaviour in the area.

6.2.1 SCHOOL GROUND ENTRANCES:

Finding:	Fencing around the grounds of Nutana Collegiate and Victoria School limits the access points into and out of the grounds for the safety and control of the area and its students. However, the access points are difficult to see.
Recommendation:	That the Planning and Development Branch, Community Services Department and the Nutana Community Association encourage Nutana Collegiate and Victoria School to paint the posts at each entrance to the school grounds a bright color. This will ensure that they are easily recognized as points of entrance/exit points.
Justification:	Painting the entrance/exit points of the school grounds will help users easily identify how to exit the grounds.



Above: An entrance/exit point in the fencing surrounding the school grounds of Victoria School.

6.3 IMAGE

The image of an area is either enhanced or detracted from the maintenance of the area. If a property is well maintained, it indicates that the owner will protect and/or defend the property against crime. Lack of maintenance may signal that the owner will overlook crime or nuisance activities on the property.

6.3.1 MURAL ARTWORK:

Finding:	Areas on the east side of the Broadway Bridge are consistently victimized by graffiti vandalism.
Recommendation:	That the Community Development Branch, Community Services Department and the Municipal Engineering Branch, Infrastructure Services Department work with the Nutana Community Association and the Broadway Business Improvement District to discourage graffiti vandalism in the area by adding mural artwork, created by local artists on the pillars adjacent to the paved pathway, in Cosmopolitan Park, under the east end of the Broadway Bridge.
Justification:	The placement of murals and/or artwork in this area may help instil sense of ownership of the space and also reduce the chances of graffiti vandalism occurring under the Broadway Bridge in the future.



Left: Local artists display their artwork on the city power boxes.

Below: Mural artwork displayed on one of the buildings adjacent to Nutana’s commercial/retail district on Broadway Avenue.



6.3.2 PROPERTY MAINTENANCE:

<p>Finding:</p>	<p>Lanes within the neighbourhood are regularly used by pedestrians. Poor upkeep of the lanes creates a poor image of the area and indicates a lack of maintenance of owners.</p>
<p>Recommendation:</p>	<p>That the Planning and Development Branch, Community Services Department, the Nutana Community Association, and the Broadway Business Improvement District host an information meeting to educate residents and business owners on the City of Saskatoon Property Maintenance and Nuisance Abatement Bylaw 8175 specifically aimed at lane maintenance.</p>
<p>Justification:</p>	<p>General upkeep improves the appearance and image of an area. It enhances the safety of legitimate users of the space and helps them feel that the area will be protected and maintained.</p>



Above: Untidy residential and commercial lanes in the Nutana neighbourhood indicate a lack of maintenance, by owners and create a poor image of the area.

6.4 TERRITORIALITY

The concept of territoriality refers to clearly defining public, semi-public and private spaces. It includes the idea of redefining the physical space so that local residents and legitimate users can be responsible for their part of the public environment.

6.4.1 NUTANA NEIGHBOURHOOD WELCOME SIGN:

Finding:	The Nutana neighbourhood has a diverse residential neighbourhood integrated with a strong Broadway core of local businesses and community services.
Recommendation:	That the Planning and Development Branch, Community Services Department, the Nutana Community Association, and the Broadway Business District meet to discuss the feasibility of a Welcome Sign in the Nutana neighbourhood that would compliment and identify the neighbourhood. This meeting would include a discussion of funding sources and an appropriate site location and design.
Justification:	A neighbourhood sign can bring together neighbourhood stakeholders and foster community building. The sign should be recognized as a monument to the Nutana neighbourhood's unique character and vibrant culture.

6.4.2 COSMOPOLITAN PARK SIGNAGE:

Finding:	Cosmopolitan Park is a naturalized area with minimal to no lighting located within. There is no signage indicating that the trails are not well lit at night and proceeding on the trails would be at the users own risk.
Recommendation:	That the Parks Branch, Infrastructure Services Department and the Planning and Development Branch, Community Services Department meet with the Meewasin Valley Authority to determine the feasibility of installing signage on the lower and upper Meewasin Trails directing users to use the promenade along Saskatchewan Crescent after dark.
Justification:	Signs are communication devices used to give public information. Often park visitors which frequent the park are familiar with the sections of a park, however if visitors are not familiar with the park the proper signage can serve as an outreach tool to better inform them about the park, in particular, entering the park at night.

6.4.3 GRAFFITI VANDALISM:

<p>Finding:</p>	<p>Graffiti vandalism exists throughout the lanes adjacent to Broadway Avenue. It appears to have been there for long periods of time on surfaces such as garbage bins and commercial buildings in lanes. This can affect user’s feelings of safety in the area.</p>
<p>Recommendation:</p>	<p>That the Planning and Development Branch and the Community Development Branch, Community Services Department meet with the Broadway Business Improvement District to discuss distribution of the Reducing Graffiti in our Community brochure to their members to help educate business owners on existing programs to combat graffiti vandalism.</p>
<p>Justification:</p>	<p>Promptly removing graffiti vandalism sends a clear message to perpetrators that the community will not tolerate this form of vandalism. The longer it remains, the more likely it is to attract additional graffiti vandalism. Removal also contributes to a positive image of the neighbourhood and a reduction in fear for personal safety from residents of, and visitors to the neighbourhood.</p>



Graffiti Vandalism Impact

Graffiti is a serious crime that impacts all members of the community. The victims of graffiti include:

- Property owners who experience tremendous expense in removing graffiti;
- Business owners who experience a loss of customers from the negative image that graffiti generates;
- Taxpayers whose dollars are spent removing graffiti on public buildings, monuments and park structures.

Reducing Graffiti Vandalism

You can help reduce graffiti in our community. If you are a victim of graffiti vandalism:

Record it Take a picture of the graffiti vandalism as soon as it is identified.

Report it Report all incidents of damage to your property by calling Saskatoon Police Service at 975-8300.

Remove it Remove graffiti from your property as quickly as possible. There are many clean-up incentives available to help you such as free recycled paint and paint discounts. The faster and more frequently graffiti is cleaned up, the less it appears. If you remove graffiti within...

- 24 hours - there is a 10% chance it will reappear.
- 2 weeks - there is a 100% chance it will reappear.

For information on clean up incentives and graffiti removal tips, please visit www.saskatoon.ca (look under 'G' for Graffiti) or call 975-3383.



6.5 CONFLICTING USER GROUPS & LAND USE MIX

This principle refers to identifying and easing the conflicts between diverse user groups in an area. The separation of land uses due to potential conflicts is one strategy that is commonly used to deal with conflicting user groups.

6.5.1 “RESPECT THE NEIGHBOURHOOD” SIGNAGE:

Finding:	Residents of the Nutana neighbourhood living adjacent to Broadway Avenue have to deal with a number of external impacts from the commercial area, such as litter, broken bottles, noise, graffiti vandalism and parking.
Recommendation:	That the Planning and Development Branch, Community Services Department meet with the Nutana Community Association and the Broadway Business Improvement District to develop and place highly visible signage in strategic locations where commercial use and residential use may conflict. These signs should encourage respect of the neighbourhood residents in a positive matter.
Justification:	The establishment of “rules” through signage may decrease conflicts between multiple user groups around the commercial areas adjacent to residential, by promoting appropriate behaviour. When conflict does occur and the rules are clearly stated it is much easier for users, residents, security or the Police to enforce.

6.6 CRIME GENERATORS

Crime generators are local activity nodes or areas in the community that tend to attract criminal activity. The presence of crime generators increases the risks of crime for everyone. Common examples of crime generators include drinking establishments, unsupervised playgrounds and vacant or poorly maintained properties.

6.6.1 24-HOUR CONVENIENCE STORE:

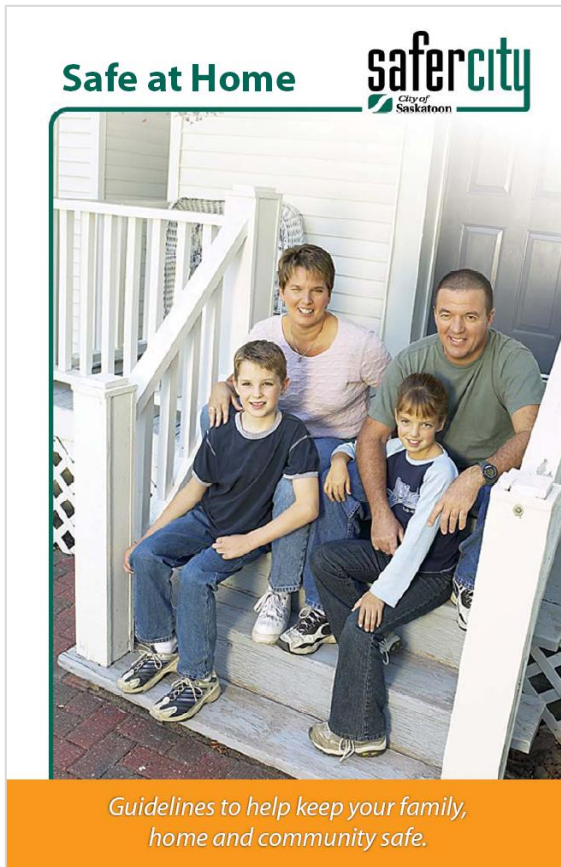
Finding:	The 24-hour convenience store on the corner of Broadway Avenue and Main Street East appears to attract nuisance behaviour and loitering. A number of incidents of crime have been concentrated around this corner (see pages 11 to 13 for Nutana Selected Crime Incident Maps).
Recommendation:	That the Planning and Development Branch, Community Services Department and the Broadway Business Improvement District meet with the convenience store Management to address known safety issues and possible remedies to improve perception of safety and reduce the opportunity of nuisance and inappropriate behaviour in the area.
Justification:	With regular attention to maintenance and upkeep of the site, loitering and nuisance behaviour may decrease. Regular upkeep of a site promotes a positive and attractive image, while deterring unsolicited behaviour.

6.7 COHESION

Neighbourhood cohesion refers to creating opportunities to encourage participation and responsibility among residents for their neighbourhood. Positive social interaction allows residents to foster a sense of community, responsibility and pride in their area.

6.7.1 SAFE AT HOME BOOKLET:

Finding:	Available materials should be distributed to help residents make their homes safer and reduce their risks of being the target of crime.
Recommendation:	That the Planning and Development Branch, Community Services Department ensure that the Nutana Community Association receive copies of the “Safe At Home” booklet and that the booklet be advertised in the Community newsletter and available to residents at a convenient neighbourhood location.
Justification:	The Safe At Home booklet provides information and resources to help residents improve their home environments and reduce opportunities for crime. Distribution of this booklet and advertisement in the Community newsletter will help ensure residents are aware of the resources that are available to make their home safer.



IMPORTANT NUMBERS

Emergency
911

City of Saskatoon Police
975-8300

Victim Services
975-8400

Community Associations
975-3378

Neighbourhood Safety - Crime Prevention
Through Environmental Design (CPTED)
975-3340

StarPhoenix Home Delivery
657-6320

SaskTel
310-7253

For more information about how to keep your home, family and community safe, contact:

Neighbourhood Safety - Crime Prevention
Through Environmental Design (CPTED)
City of Saskatoon, City Planning Branch
222 - 3rd Avenue North
Saskatoon, Saskatchewan S7K 0J5
(306) 975-3340


www.saskatoon.ca

6.8 CULTURE & CONNECTIVITY

Community Culture is created through a shared sense of place and history among residents. This can be established and strengthened through festivals, sporting events, public art and music events. A strong sense of community culture enhances pride and territoriality, thereby helping to reduce crime rates.

The principle of connectivity refers to maintaining connections both within the community and with other groups and organizations external to the community. These connections help the community to access information and services that support the goals of the community and its residents.

Nutana has a number of high profile festivals, such as the Fringe Festival and the Broadway Street Fair, that draw on a city wide and even a regional base for attendance in addition to the draw from the surrounding neighbourhood. There is some concern in the neighbourhood that these city wide activities are not balanced with neighbourhood based activities and that both are needed for a strong and vibrant community.

6.8.1 COMMUNITY-BASED ACTIVITIES:

<p>Finding:</p>	<p>There are few opportunities for neighbourhood residents to come together as a whole or to get to know one another at the block level.</p> <p>Victoria School Park and Nutana Collegiate Park are often underutilized and offer space for programming that would appeal to different segments of the residents in the community.</p>
<p>Recommendation:</p>	<p>That the Community Development Branch, Community Services Department work with the Nutana Community Association to identify the support for formal or informal community-based activities that would bring together the neighbourhood stakeholders at the neighbourhood level. The redevelopment of Victoria School Park and the Nutana Collegiate Park offers an opportunity to establish additional community programming and activities, such as local festivals which encourage walking or biking to the event.</p>
<p>Justification:</p>	<p>Encouraging activities focused around members of the neighbourhood supports the strong neighbourhood culture based on the local geography. Programs such as “Neighbourhood Day in the Park” or Block Parties help encourage neighbourhood development and strengthen community culture.</p> <p>Community programming in the parks will create a sense of pride and ownership over the parks. New activities may also encourage people to use the park at different times of the day, increasing natural surveillance.</p>

6.9 GENERAL

Coordination within the implementation process is critical to the timely completion of recommendations and empowerment within the neighbourhood. A clear understanding of what will be completed, when and by whom, and what resources are needed, helps all stakeholders understand their role in contributing to the safety of the Nutana neighbourhood.

6.9.1 COORDINATION OF IMPLEMENTATION BUDGETS:

Finding:	Coordination of projects and budgets, both operating and capital, is critical to the timely implementation of the recommendations.
Recommendation:	That the Neighbourhood Planning Section contact all identified departments to coordinate the estimated operating and/or capital budgets and submit a comprehensive Neighbourhood Safety budget request to City Council for funding and implementing these recommendations once the report has been approved.
Justification:	<p>Funding specifically identified to address Neighbourhood Safety recommendations will ensure that implementation can move forward, in a planned and timely manner, to reduce the opportunity for crime to occur in Nutana and to increase residents' perceptions of safety in the neighbourhood.</p> <p>A collaborative and proactive approach to funding these recommendations will allow the departments involved in these projects to budget staffing and funding in a comprehensive and efficient manner and will lead to safer environments.</p>

7.0 Implementation

7.1 SUMMARY OF IMPLEMENTATION ACTIVITIES

The recommendations and findings presented in this report offer a number of opportunities to reduce the opportunity for crime to occur and increase perceptions of safety in the Nutana Neighbourhood.

The Nutana LAP Committee identified three neighbourhood safety goals:

- To ensure that the Broadway Area remains a safe place to live, work and visit;
- To ensure that local property owners and users receive right of reasonable use from their property;
- To foster a long-term community, cooperative approach to safety and security.

Implementation of the recommendations contained in this report will support the goals of the Nutana LAP Committee, the action plan created by the Safety Subcommittee, as well as the related recommendations in the Nutana Local Area Plan.

This report will be submitted to the Nutana Community Association and various civic departments including the Saskatoon Police Services, and to City Council for approval. The Planning and Development Branch will use this report in the continued implementation of the recommendations of the Nutana Local Area Plan.

The following section reconfigures the recommendations, by site, for ease of searching and implementation.

7.2 RECOMMENDATIONS BY LOCATION



NUTANA COLLEGIATE AND VICTORIA SCHOOL GROUNDS

- 6.2.1 SCHOOL GROUND ENTRANCES:** That the Planning and Development Branch, Community Services Department and the Nutana Community Association encourage Nutana Collegiate and Victoria School to paint the posts at each entrance to the school grounds a bright color. This will ensure that they are easily recognized as points of entrance/exit points.

COSMOPOLITAN PARK

- 6.1.1 COSMOPOLITAN PARK FOLIAGE:** That the Parks Branch, Infrastructure Services Department trim overgrown trees and bushes along the 600 and 700 blocks of Saskatchewan Crescent East, to increase natural surveillance, sightlines and help reduce hiding places in the area.
- 6.1.2 SASKATCHEWAN CRESCENT EAST LIGHTING:** That Saskatoon Light & Power review the feasibility of replacing the existing street lighting on the 600 to 900 blocks of Saskatchewan Crescent East in 2010, under the existing Street Lighting Upgrade Capital Budget program.
- 6.3.1 MURAL ARTWORK:** That the Community Development Branch, Community Services Department and the Municipal Engineering Branch, Infrastructure Services Department work with the Nutana Community Association and the Broadway Business Improvement District to discourage graffiti vandalism in the area by adding mural artwork, created by local artists on the pillars adjacent to the paved pathway, in Cosmopolitan Park, under the east end of the Broadway Bridge.
- 6.4.2 COSMOPOLITAN PARK SIGNAGE:** That the Parks Branch, Infrastructure Services Department and the Planning and Development Branch, Community Services Department meet with the Meewasin Valley Authority to determine the feasibility of installing signage on the lower and upper Meewasin Trails directing users to use the promenade along Saskatchewan Crescent after dark.

BROADWAY AVENUE

- 6.1.3 ELIMINATE HIDING PLACES:** That the Planning and Development Branch, Community Services Department develop a Safety Fact Sheet on eliminating hiding places behind garbage containers in lanes, and alcoves in front and behind the local businesses on Broadway Avenue and that the Broadway Business Improvement District distribute it to their members.
- 6.1.4 LANE TREE/BUSH TRIMMING:** That the Municipal Engineering Branch, Infrastructure Services Department bring forward a capital budget proposal to remove all volunteer trees and bushes and trim overhanging foliage in the lanes between Dufferin Avenue and Eastlake Avenue and between 8th Street and 12th Street and meet with the Planning and

Development Branch, Community Services Department to develop general public guidelines on the importance of maintaining an appropriate level of lane maintenance that will reduce the opportunity for crime to occur.

- 6.6.1 24-HOUR CONVENIENCE STORE:** That the Planning and Development Branch, Community Services Department and the Broadway Business Improvement District meet with the convenience store Management to address known safety issues and possible remedies to improve perception of safety and reduce the opportunity of nuisance and inappropriate behaviour in the area.

NUTANA NEIGHBOURHOOD

- 6.3.2 PROPERTY MAINTENANCE:** That the Planning and Development Branch, Community Services Department, the Nutana Community Association, and the Broadway Business Improvement District host an information meeting to educate residents and business owners on the City of Saskatoon Property Maintenance and Nuisance Abatement Bylaw 8175 specifically aimed at lane maintenance.
- 6.4.1 NUTANA NEIGHBOURHOOD WELCOME SIGN:** That the Planning and Development Branch, Community Services Department, the Nutana Community Association, and the Broadway Business District meet to discuss the feasibility of a Welcome Sign in the Nutana neighbourhood that would compliment and identify the neighbourhood. This meeting would include a discussion of funding sources and an appropriate site location and design.
- 6.4.3 GRAFFITI VANDALISM:** That the Planning and Development Branch and the Community Development Branch, Community Services Department meet with the Broadway Business Improvement District to discuss distribution of the Reducing Graffiti in our Community brochure to their members to help educate business owners on existing programs to combat graffiti vandalism.
- 6.5.1 “RESPECT THE NEIGHBOURHOOD” SIGNAGE:** That the Planning and Development Branch, Community Services Department meet with the Nutana Community Association and the Broadway Business Improvement District to develop and place highly visible signage in strategic locations where commercial use and residential use may conflict. These signs should encourage respect of the neighbourhood residents in a positive matter.
- 6.7.1 SAFE AT HOME BOOKLET:** That the Planning and Development Branch, Community Services Department ensure that the Nutana Community Association receive copies of the “Safe At Home” booklet and that the booklet be advertised in the Community newsletter and available to residents at a convenient neighbourhood location.
- 6.8.1 COMMUNITY-BASED ACTIVITIES:** That the Community Development Branch Community Services Department work with the Nutana Community Association to identify the support for formal or informal community-based activities that would bring together the neighbourhood stakeholders at the neighbourhood level. The redevelopment

of Victoria School Park and the Nutana Collegiate Park offers an opportunity to establish additional community programming and activities, such as local festivals which encourage walking or biking to the event.

- 6.9.1 COORDINATION OF IMPLEMENTATION BUDGETS:** That the Neighbourhood Planning Section contact all identified departments to coordinate the estimated operating and/or capital budgets and submit a comprehensive Neighbourhood Safety budget request to City Council for funding and implementing these recommendations once the report has been approved.

7.3 PRIORITIES OF THE NUTANA SAFETY SUBCOMMITTEE

The consultation process for the Nutana neighbourhood provided stakeholders with a number of opportunities to identify those neighbourhood safety issues that are of the greatest concern. Additionally, wherever possible the implementation of recommendations will be incorporated within existing operating activities or capital projects to minimize the cost of implementation and ensure recommendations are addressed in rational sequence. In light of these factors, the Administration with the help from members of the Safety Subcommittee have identified the priority areas for implementation:

The following priorities have been identified by Administration to be incorporated into existing operating activities or capital projects:

- **Coordination of Budgets** – The coordination of implementation items with operating and capital budgets is a high priority. Where possible, implementation of this report’s recommendations will be integrated into existing operating budgets and capital projects. In some cases, specific capital budget requests may be necessary. The following recommendation addresses this matter:
 - 6.9.1 – COORDINATION OF IMPLEMENTATION BUDGETS
- **School Ground Entrances** – Both Victoria School and Nutana Collegiate are undergoing a preliminary design review of their school grounds, in conjunction with the City of Saskatoon Parks Branch and Community Development Branch. This particular recommendation can be integrated into the existing design plans.
 - 6.2.1 – SCHOOL GROUND ENTRANCES

The following recommendations have been identified by the Nutana Safety Subcommittee as priority for implementation:

- Recommendation 6.1.3 – **Eliminate Hiding Places;**
- Recommendation 6.1.4 – **Lane Tree/Bush Trimming;**
- Recommendation 6.5.1 – **“Respect the Neighbourhood” Signage.**

The Nutana Community Association and Neighbourhood Safety Subcommittee will have opportunities to revisit these identified priorities throughout the implementation process of the Nutana Neighbourhood Safety Audit Report.

8.0 Appendices

- 8.1 Safe/Unsafe Areas Exercise Results**
- 8.2 Perceived Unsafe Sites and Areas Results**
- 8.3 Nutana Safety Action Plan**
- 8.4 Neighbour to Neighbour Survey and Results**
- 8.5 Safety Audit Survey Form**
- 8.6 Crime Prevention Through Environmental Design**

8.1 SAFE/UNSAFE AREAS EXERCISE RESULTS

The goal of this exercise was to identify areas in the neighbourhood where participants felt safe, unsafe or whether they had no concerns to note. These were identified on a map of the Nutana neighbourhood.

Participants were split into four groups and each group marked on the map:

- Areas where they feel safe, in green marker;
- Areas where they feel unsafe, in red marker, and
- Identified and explained these areas.

Each participant in the group then marked on the map:

- One specific site where they felt safest, using a numbered green dot;
- One specific site where they felt the most unsafe, using a numbered red dot;
- If they did not feel strongly about either the safe or unsafe sites, their coloured dot was to be placed under the “No Concern” heading; and
- Identified and explained each dot.

The following is a summary of this exercise. It includes the reasons that participants identified areas and specific sites as *safe* or *unsafe*.

“AREAS WHERE WE FEEL UNSAFE”

2-A – Lower path along the river feels dangerous even during day

2-B – Dangerous intersection

3-A – Massey Park

- Older kids hangout/horse around
- Apartment nearby (don't care about the neighbourhood)
- Dark, high hedge

3-B – Woodchip Path – isolated, through the middle of the bush

- People living there (younger/not from Nutana)
- Some won't go day or night or alone
- Some would go only during the day

3-C – Bridges

- Wouldn't walk alone at night
- Places to hide on Broadway Bridge
- Mixed views on day and night

3-D – Pedestrian Underpass (11th and Idylwyld)

- Lights not always working
- Blind corner/no clear sight
- L-shaped path/stairs
- Can't see through

3-E – Lane

- No one can see you
- Sound wall may add to the problem

3-F – Pedestrian Underpass

- Steps that go up
- Needs to be examined

3-G – Gabriel Dumont Park

- Wild drinking
- Assaults
- Cougars
- Known by residents as party place
- Broken beer bottles in park

3-H – Over grown trees/empty lots

- Cliffside
- Places to hide/camp
- Vandalism
- Dark – trees block streetlights especially at night

3-I – Vandalism/Break and enters to vehicles by people waiting from Traffic Bridge

3-J – Car Vandalism (stereos)

3-K – Victoria and Main Crosswalk

- Cars don't stop and they speed
- Traffic from Victoria
- Uncontrolled intersection
- Cars don't stop on Victoria

3-L – Broadway and 9th

- Crosswalk – no one stops

3-M – Victoria and 8th

- People run red lights
- Takes too long to cross (turning of lights)

3-N – 8th and McPherson

- Zebra Crosswalk, don't feel safe crossing

“SITES WHERE WE FEEL UNSAFE”

1-1 – 100 block of 10th Street East

- Pedestrian underpass of Idylwyld, dark, cannot see to other side

1-2 – Perennial area for graffiti, including North side of Grace Westminster church

2-13 – Problem house drug/break and enter history

2-17 – Tunnel that goes under Idylwyld Drive. Walking that encourages fast traffic through my neighbourhood. A lot of crime on this path.

“AREAS WHERE WE FEEL SAFE”

3-A – University Drive

- Feels safe to walk night/day
- Lots of people around
- Homes well taken care of property

3-B – Clarence Avenue

- Lots of traffic/lighting/people

“SITES WHERE WE FEEL SAFE”

1-51 – Amigos (10th and Dufferin)

- Parking provided (looking at reducing centre median for parking)

1-55 – Broadway Theatre – slices of life from around the world

1-56 – Roastery and outside area a very pleasant gathering place

1-57 – Yard and Flagon – Friendly

2-57 – Albert Community Centre (community gathering place)

2-58 – open – Massey Park

2-59 – clean and well lit park

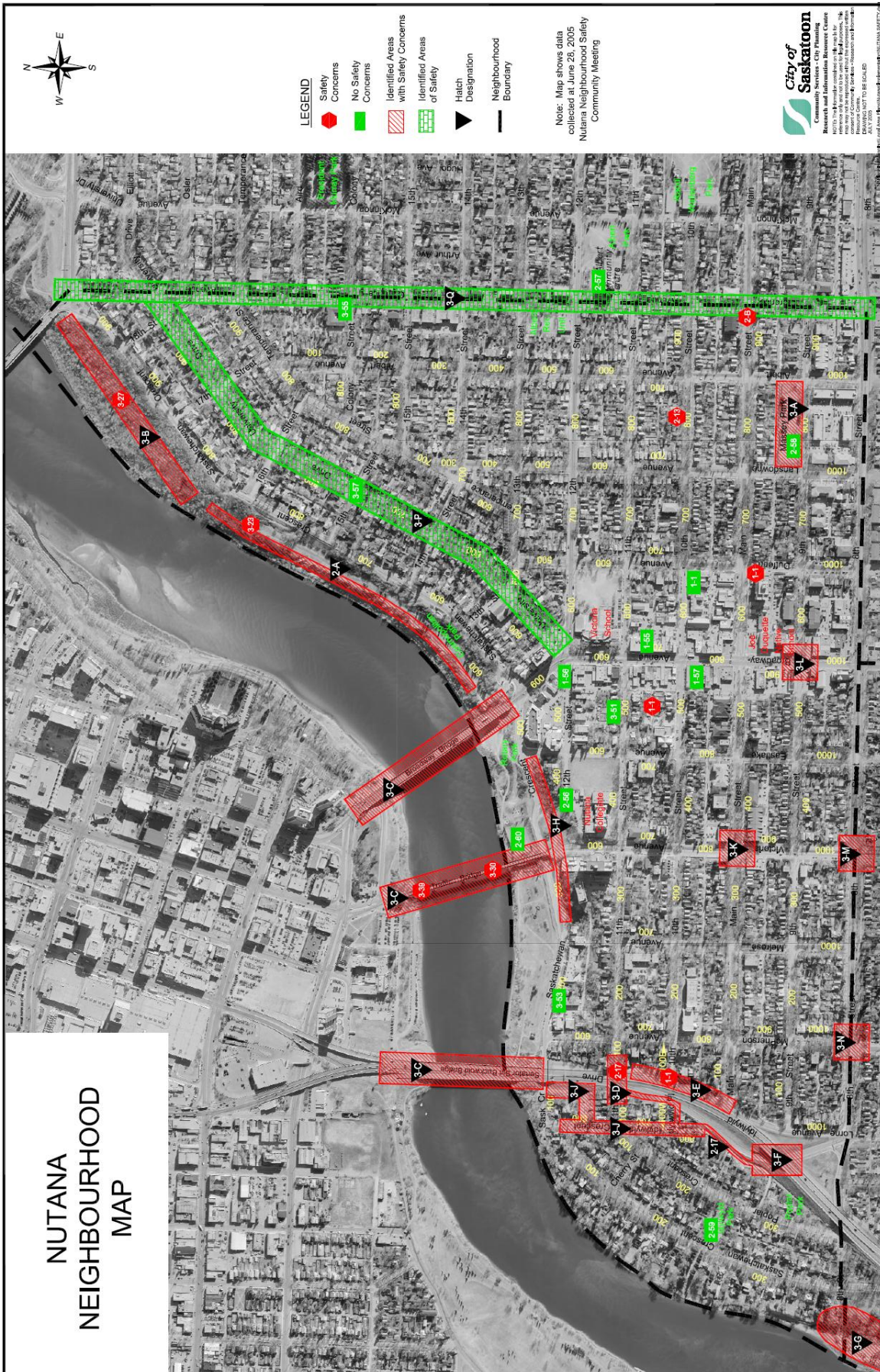
2-60 – recreation

2-66 – 12th Street to 8th Street - fun places

General Comments

- Difference between East and West from Broadway Avenue (i.e.: angle parking, touring off Victoria (left); Broadway (right). East seems quieter than west!
- Mixture of housing types appropriate for various users (diversity)
- Generally, safe in all places

No Concerns - 5



NUTANA
NEIGHBOURHOOD
MAP

8.2 PERCEIVED UNSAFE SITES AND AREAS RESULTS

The Nutana Safety Subcommittee identified the following priorities at their September 2005 meeting. The Broadway Avenue Area Map illustrates the unsafe sites and areas that were identified.

Prioritized Unsafe Areas

High

1-C – Lydia's

2-A – 7-11 in the evening, larger groups loitering is threatening

2-B – Lanes adjacent to commercial areas (during the evening)

2-F – People exiting the Hose and Hydrant Pub at night between 11 p.m. – 2 a.m.
– litter/noise/loitering

3-B – Strip mall (9th & Broadway)/Oskayak High School (formerly Joe Duquette High School)

3-D – Bars/Taverns/Lounges

Average

1-A – 500 block of Broadway Avenue between 10th and 11th Street

1-D – 7-11 parking lot

1-E – Area in front of the Broadway Roastery (although actually noted as a *safe* area at Community Safety Meeting)

Low

1-B – Back lane of the 700 block of Eastlake Avenue

3-A – Trees, lighting, place where people hide/camp

Top Unsafe Sites

2-5 – 7-11 Convenience Store

2-9 – Underneath the Broadway Bridge in Cosmopolitan Park



8.3 NUTANA SAFETY ACTION PLAN

Nutana Community Association Neighbourhood Safety Subcommittee					
Action Plan February 2006					
#	Area	Subcommittee's Perceived Issues	Action	Participants	Date
1	Cosmopolitan Park, Between Broadway Bridge and 13th Street	Park safety issues raised, including reports of people living under the Broadway Bridge, also concerns of campfires and littering.	Neighbour-to-Neighbour Survey	Subcommittee	Thurs, Mar 2
	Comments	Survey will provide additional information and get more residents involved. Subcommittee can take opportunity to invite those surveyed to participate in upcoming Subcommittee activities and meetings.			
2	Broadway Area	Incivilities related to pub patron behaviour, specifically, upon leaving establishments and returning to vehicles parked in the adjacent residential neighbourhood, resulting in complaints regarding noise, litter, vandalism and drunk driving.	Meeting with Broadway Area Liquor Permit Holders	City Planning, Broadway B.I.D., Broadway Area Liquor Permit Holders	Tues, Mar 7
	Comments	Meeting will lay foundation for working with both Safety Subcommittee and local liquor permit holders in addressing perceived incivilities related to pub patrons.			
3	700 and 800 blocks of Dufferin Avenue and 600 and 700 blocks of 10th Street (Amigo's area)	Amigo's is perceived to be impacting the immediately adjacent residential neighbourhood, due to the behaviour of pub patrons and possible noise, litter, drunk driving, etc.	Neighbour-to-Neighbour Survey	Subcommittee	March to May
	Comments	Survey will provide additional information on the impact of local pubs in the area and get more residents involved. Subcommittee can take opportunity to invite those surveyed to participate in upcoming Subcommittee activities and meetings.			
4	Nutana Collegiate Portable Classroom and Alleys Bounded by the 600 Blocks of Broadway and Eastlake Avenues and the 500 Blocks of 11th and 12th Streets	Nutana Collegiate portable classroom said to be attracting people late at night, as well, back alleys in block between Nutana Collegiate and Broadway Avenue were identified as potentially unsafe.	Safety Audit	Subcommittee, City Planning, Adjacent residents	Thurs, May 4
	Comments	Concerns around Nutana Collegiate portable classroom will be best addressed following winter, when people are thought to be in the area at night. Safety Audit will identify specific safety concerns, opportunities for crime to occur, and users/residents' perception.			
5	Broadway Area	Incivilities related to pub patron behaviour, specifically, upon leaving establishments and returning to vehicles parked in the adjacent residential neighbourhood, resulting in complaints regarding noise, litter, vandalism and drunk driving.	Subcommittee Meeting	Subcommittee, City Planning, Broadway B.I.D., Broadway Area Liquor Permit Holders	week of Mon, Apr 24
	Comments	Meeting will include discussions and ideas to best address perceived pub patron incivilities and methods to minimize the impact these establishments have on the surrounding, adjacent residential areas and promote neighbourhood friendly behaviour.			

#	Area	Subcommittee's Perceived Issues	Action	Participants	Date
6	900 Block of Broadway Avenue and Strip Mall Area	Issues identified include dark and dangerous back alleys around strip mall and concerns along Broadway related to bank and grocery store parking lot, as well as pedestrian crossing issues.	Safety Audit	Subcommittee, City Planning, Adjacent residents	Sat, June 10
	Comments	Safety Audit will identify specific safety concerns, opportunities for crime to occur, and users/residents' perception of their safety.			
7	Cosmopolitan Park, Between Broadway Bridge and 14th Street	Park safety issues raised, including reports of people living under the Broadway Bridge, also concerns of campfires and littering.	Safety Audit	Subcommittee, City Planning, Adjacent residents	Fri, June 23
	Comments	Concerns along riverbank will be best addressed following winter, when more people are likely to be in the area. Safety Audit will focus on sites identified by Safety Subcommittee during preliminary walk-about of areas perceived to be unsafe in the Broadway area and identify specific safety concerns, opportunities for crime to occur, and users/residents' perception			
8	700 Block of Broadway and Eastlake Avenues and 500 Block of 10th and 11th Street	Issues identified include concerns around back alleys perceived to be dark and dangerous, pub patron issues and graffiti vandalism.	Safety Audit	Subcommittee, City Planning, Adjacent residents	Tues, June 27
	Comments	Safety Audit will identify specific safety concerns, opportunities for crime to occur, and users/residents' perception of their safety.			
9	800 Block of Broadway Avenue	Variety of issues on 800 block of Broadway identified, including dark and dangerous back alleys, the 7-11 drawing large groups of young people that may be intimidating, as well, the block has three pubs and a bank that may be providing opportunities for crime to occur.	Safety Audit	Subcommittee, City Planning, Adjacent residents	Fri, July 14
	Comments	Safety Audit will identify specific safety concerns, opportunities for crime to occur, and users/residents' perception of their safety.			

8.4 NEIGHBOUR TO NEIGHBOUR SURVEY AND RESULTS

Nutana Safety Audit Questionnaire and Script

Hello,

My name is _____ and this is _____. We are members of the Nutana Community Association's Neighbourhood Safety Subcommittee. I am one of your neighbours and live just _____ ("your address", "the next block over", "the other side of the park", etc)

We'd like to invite you to participate in upcoming Safety Audit Walk-about in the area and we'd like you to join our Nutana Safety Subcommittee.

The Safety Audit Process.

What is a Safety Audit Walk-about?

A Safety Audit Walk-about is a thorough examination of an area, where local residents walk through the area and identify specific safety concerns, opportunities for crime to occur, and the existing perceptions of safety for residents in the neighbourhood. Ultimately, the goal of a Safety Audit is to enhance both the perceived and actual level of safety for residents and stakeholders.

Why are we performing Safety Audits?

Safety Audits are part of our action plan to address neighbourhood safety-related recommendations from the Nutana Local Area Plan. As a result, we are working directly with the City of Saskatoon to identify safety issues and concerns in the neighbourhood.

Our Safety Subcommittee has been collecting information regarding neighbourhood safety concerns through subcommittee meetings, a community safety workshop, as well as the Nutana Neighbourhood Safety Community Meeting that was held on June 28, 2005.

This is where you come in.

Local stakeholders have identified Cosmopolitan Park /OR the area immediately east of Broadway, between Main and 11th Streets as possibly having some safety-related issues that need to be addressed. Because you live adjacent to the park, you may have a unique view of what is happening in this part of the neighbourhood. We would like to ask you a few questions that may help us further identify what it is that's going on to affect people's perceptions of safety.

May I take 5 minutes of your time?

Thank you

Cosmopolitan Park – Neighbour Survey

Date: _____ **Surveyor:** _____

Postal Code: _____ **Gender:** Female Male (Circle one)

1. **How many years have you been a resident of Nutana?** (Circle one)

Less than 1 year 1-4 years 5-9 years 10-14 years 15-19 years
20-24 years 25 and over

2. **Which of the following age categories do you fall in to?** (Circle one)

19 and under 20-29 years 30-39 years 40-49 years 50-59 years 60-69 years
70 and over

3. **How often do you or your family walk in Cosmopolitan Park?** (Circle one)

Daily 3-5 times/week Once a week Once a month Never

4. **Do you feel safe walking in Cosmopolitan Park:**

a. **During the day?** YES NO Why?

b. **During the early evening?** YES NO Why?

c. **At night (after 10 pm)?** YES NO Why?

5. **Have you ever noticed any illegal activity in Cosmopolitan Park?** YES NO
What was going on?

6. **Have you, or anyone you love, ever experienced an incident in Cosmopolitan Park that made you feel afraid or unsafe?** YES NO
If YES, please explain

7. **Do you have any other safety-related comments you'd like to make?**

Cosmopolitan Park – Neighbour Survey Results

Survey Area: Postal Code - S7N 0K9, S7N 0L1, S7N 0L2
Date of Survey: March 2 to 15, 2006
Size of survey group: 12
Sex: 8 out of 12 were men. 3 were women. 1 N/A.

1. Year as Resident

- 3 out of 12 (25%) have resided in the area for 1-4 years.
- 4 out of 12 (33%) have resided in the area for 5-9 years.
- 1 out of 12 (8%) have resided in the area for 10-14 years.
- 1 out of 12 (8%) have resided in the area for 15-19 years.
- 1 out of 12 (8%) have resided in the area for 20-24 years.
- 2 out of 12 (17%) were have resided in the area for more than 25 years.

2. Age

- 2 out of 12 (17%) were between the ages of 30 and 39.
- 3 out of 12 (25%) were between the ages of 40 and 49.
- 3 out of 12 (25%) were between the ages of 50 and 59.
- 2 out of 12 (17%) were between the ages of 60 and 69.
- 2 out of 12 (17%) were over the age of 70.

3. How often in Cosmopolitan Park?

- 4 out of 12 (33%) daily
- 5 out of 12 (42%) 3-5 times per week
- 2 out of 12 (17%) once a week
- 1 out of 12 (8%) never

4a. Safe walking day?

- 11 out of 12 (92%) answered “YES”
- 1 out of 12 (8%) answered “NO”
Why? “Yes”
 - We have a dog
 - Other people, know people, light
 - Lots of activity, no problems
 - People utilize the park at this time, jogging or enjoying riverbank**Why? “No”**
 - Interviewee does not allow his children to go alone in park, not even during the day.

4b. Safe walking early evenings?

- 8 out of 12 (67%) answered “YES”
- 3 out of 12 (25%) answered “NO”
- 1 person did not answer question.
Why? “Yes”
 - Other people around, know people around, light
 - Lots of people around

4c. Safe walking night?

- 3 out of 12 (25%) answered “YES”
 - 9 out of 12 (75%) answered “NO”
- Why? “Yes”**
- Only concern is lover’s path – people are in the bushes
 - Yes but I don’t go down to the lower area, there are people down there, young people especially at night, hear girls screaming
 - Can be young kids, down lower path in summer.
- Why? “No”**
- Too many drug deals taking place
 - Know there are things going on
 - Fires- call fire department every time
 - Parties in the bushes, smoking god knows what
 - People sleep there
 - We do not feel safe walking in the park at night because group of young people and homeless people seem to loiter there at night.

5a. Noticed illegal activity?

- 8 out of 12 (67%) answered “YES”
- 4 out of 12 (33%) answered “NO”

5b. What?

- Drug uses and sales
- Fires – these will be logged – how many times? Objective data on this.
- Drinking – see remnants of activity
- Smoking illegal substances
- Beer bottle, urinating, couples making out, marijuana smoking, fires, people sleeping below bridges and in bushes.
- Beer bottles, urinating (not only in Cosmo Park, but also on the corner of property) drug trafficking below Pioneer Monument, especially in summer, drug dealers in park at the corner of Sask. Cres. And Broadway Ave.
- We found graffiti on our garage on one occasion. We also suspect, but cannot prove, underage drinking and drug use in the park.

6a. Experienced incident to make you feel afraid?

- 10 out of 12 (83%) answered “YES”
- 2 out of 12 (17%) answered “NO”

6b. Yes, explain?

- Don’t go out when I know it is unsafe
- Odd people – animals tethered – not threatening
- Interviewee recommends police bicycle patrol in park
- Two groups of young people screaming profanities at each other near Pioneer monument. One group piled into a van to leave, and a youth from the other group ran over and smashed the van’s rear window with skateboard.
- A teenager under the influence of drugs and alcohol broke into the house next door. We found him wandering in our backyard, trying to find an escape route before the police arrived.

- A man entered the garage, begging for money as we were leaving for work in the morning.
- We found two bottles of unopened Listerine hidden behind our garbage can in the back alley.
- Foiled a break and enter attempt at 1am last winter, when two individuals cut the screen of our kitchen window. They were about to break glass when we opened door and shouted, they ran off.
- Two weeks ago a suspicious looking man appeared to be inspecting homes along our street. He walked slowly down the sidewalk, looking in windows and walking up to front door of one of the neighbour's houses. He then proceeded to view the homes from the back alleys.
- We were awakened one night at 4 am by two individuals pounding on our front windows and door, and stomping on our deck. One was without shirt or shoes despite the -30 degree weather. They eventually left. Police didn't respond to our call for almost an hour.
- Our neighbours have been broken into five times in the past few years. This is despite having an active security system and most recently a camera.
- Homeless people inspect the garbage cans in our back alley each morning and often congregate or sleep in Cosmopolitan Park

7. Any safety-related comments

- Door to door people
- Hate the Fringe activity, it blocks off access to prevent "walk through", car out on the street suffered \$3000 in damages, 7-11 often bothered by young guys asking for money, negative talk and frequent target for B/E.
- Cars are randomly vandalized
- Need a neighbourhood watch, see people with empty back pack with no apparent reason for being in the area
- Don't feel safe, had incidents of car window being smashed, broken off mirrors, and debris foolishness
- the lower riverbank, lots of deadfall and trees that could be thinned out
- mattress and camp stove in enclosed area
- interviewee annoyed by long-term parking in front of his property by people who work downtown
- Fires set in park spread sometimes through the grass to street level. Fire service had to be called.
- Interviewee was wondering if break and enters in the area was related to drug trafficking.
- While the police bicycle patrols in summer are very helpful, police presence in winter (when there are more hours of darkness) seems inadequate. I rarely if ever see a patrol car on our street.
- Our primary concern is the increased number of break-ins on our street.

East of Broadway Avenue – Neighbour Survey

Date: _____ **Surveyor:** _____

Postal Code: _____ **Gender:** Female Male (Circle one)

1. **How many years have you been a resident of Nutana?** (Circle one)

Less than 1 year 1-4 years 5-9 years 10-14 years 15-19 years
20-24 years 25 and over

2. **Which of the following age categories do you fall in to?** (Circle one)

19 and under 20-29 years 30-39 years 40-49 years 50-59 years 60-69 years
70 and over

3. **How often do you or your family walk in the area east of Broadway?** (Circle one)

Daily 3-5 times/week Once a week Once a month Never

4. **Do you feel safe walking in the area east of Broadway:**

a. **During the day?** YES NO Why?

b. **During the early evening?** YES NO Why?

c. **At night (after 10 pm)?** YES NO Why?

5. **Have you ever noticed any illegal activity in the area east of Broadway?** YES NO
What was going on?

6. **Have you, or anyone you love, ever experienced an incident in the area east of Broadway that made you feel afraid or unsafe?** YES NO
If YES, please explain

7. **Do you have any other safety-related comments you'd like to make?**

East of Broadway Avenue – Neighbour Survey Results

Survey Area: Postal Code - S7N 1C5, S7N 1C6, S7N 1E5, S7H 0H1,
S7H 0K1, S7H 0J9, S7J 1W9, S7N 0G3

Date of Survey: April 10 to May 20, 2006

Size of survey group: 17

Sex: 10 out of 17 were men. 6 were women. 1 N/A.

1. Years as Resident

- 1 out of 17 (6%) have resided in the area for less than 1 year.
- 3 out of 17 (18%) have resided in the area for 1-4 years.
- 5 out of 17 (29%) have resided in the area for 5-9 years.
- 4 out of 17 (23%) have resided in the area for 10-14 years.
- 1 out of 17 (6%) have resided in the area for 15-19 years.
- 2 out of 17 (12%) have resided in the area for 20-24 years.
- 1 out of 12 (6%) were have resided in the area for more than 25 years.

2. Age

- 2 out of 17 (12%) were between the ages of 20 and 29.
- 4 out of 17 (24%) were between the ages of 30 and 39.
- 2 out of 17 (12%) were between the ages of 40 and 49.
- 5 out of 17 (29%) were between the ages of 50 and 59.
- 1 out of 17 (6%) were between the ages of 60 and 69.
- 3 out of 17 (18%) were over the age of 70.

3. How often are you in the area East of Broadway?

- 16 out of 17 (94%) daily
- 1 out of 17 (6%) 3-5 times per week

4a. Safe walking day?

- 17 out of 17 (100%) answered “YES”
Why? “Yes”
- People around
- No problems
- Densely populated, lots of people
- Familiarity, people, lighter
- People on streets
- Know the neighbourhood
- See no threats
- It’s a safe community; you see families, people going to work. You see middle upper class people.
- Lived here 10 years
- Feel safe

4b. Safe walking early evenings?

- 17 out of 17 (100%) answered “YES”
Why? “Yes”

- Same as previous

4c. Safe walking night?

- 13 out of 17 (76%) answered “YES”
- 2 out of 17 (12%) answered “NO”
- 1 out of 17 (6%) answered “YES” and “NO”
- 1 out of 17 (6%) N/A

Why? “Yes”

- No Problems
- Bars rowdy but OK, not a safety issue
- A young guy feels safe
- People on the streets
- Familiarity with district
- After dark I am more cautious but don’t feel scared or threatened in any way.
- Don’t walk alone, walks to familiar places and stay in light
- Normally walk with a big dog, or in group, would be afraid without a dog.

Why? “No”

- Change in type of people
- Avoid walking/uncivil behaviour
- Concerns build up, Victoria School has groups of people at school
- Broken (wrecked) build board in front

5a. Noticed illegal activity?

- 11 out of 17 (65%) answered “YES”
- 6 out of 17 (35%) answered “NO”

5b. What?

- Behind Sasktel – public drinking
- Windshield kicked in
- Car vandalism
- Kids hanging out behind Sasktel building
- Lots of drinking and disorder
- Drug dealing
- Vandalism, B and E, attempted robbery
- Public drinking and urination
- Noise problem with pubs
- Teenagers gather at the school in front, sometimes leads to fireworks spray in front on 11th yelling and screaming till 2 am.
- People drive too fast, that happens everywhere
- Graffiti
- Had bike stole, car broken into, shed broken into, house attempted to be broken into
- Think people were coming to pick up drugs at nearby house
- People drinking and then driving
- Seeing intoxicated people driving away from bars

- Seeing people scouting out houses (although not illegal, can lead to a break-in)

6a. Experienced incident to make you feel afraid?

- 8 out of 17 (47%) answered “YES”
- 7 out of 17 (41%) answered “NO”
- 2 out of 17 (12%) N/A

6b. Yes, explain?

- Break and enter
- Brawl on front yard
- A Woman at Broadway condos high rise was attacked.
- Good friend had break and enter
- During the fringe someone stole cushions from patio furniture and cover from BBQ.
- Houses on both sides broken into
- People going to the bathroom on lawn
- Someone tried to grab my wife’s purse
- Sometimes “riff raff” strolling down alleys
- Friend got mugged

7. Any safety-related comments

- Noise and litter
- Hate new parking meters
- Street parking
- Vandalism
- Yard theft
- Drunk driving
- Car vandalism
- Drug dealing on Broadway. I know one first hand. Same group.
- They shoot up by the garbage in the lanes behind the Hose and Hydrant.
- Syringes are thrown into our yard.
- Seniors Club sometimes gets out of hand.
- Fire doors open beside our house and they leave them open. Wild groups are bothersome.
- Main Concern - The really rough group. We're seeing this other element that mainly congregates around Buds. This increasing.
- Two Problems - Drugs around Buds 2 AM, young (university) people.
- Two distinct groups that confront each other.
- Our neighbour's fence is a place where they urinate. We find needles/condoms.
- The bars are a huge problem, fights, drunken people, and noise.
- The Fringe is very disruptive, traffic, crime, beer gardens.
- Parking restriction should be more severe - give alternate parking.
- There is too much litter, more public garbage bins.
- Too much graffiti
- Drunk driving.
- Upset with graffiti
- Board several times off fence
- Sometimes apprehensive after hearing about crime in other parts of the city

- Neighbours have had break-ins, some neighbours have had graffiti on fences and garages
- Late evening, bar patrons noisy when going home; sometimes fights break out
- More break-ins
- People coming back from bar late at night making noise and more people smoking on the street in evening makes the street seem safe
- It would be nice to get rid of panhandlers.
- I think in the back alley between Dufferin and Broadway (700 block) it would be good to have a cascade of street lights.
- Anything that happens seems to happen during the Fringe. There should be extra security during the Fringe. Stationed around area until 3 AM.
- We do have a lot of bars - I like having bars in walking distance. The bar goers are not a problem as far as I can see. But if someone is walking with a beer bottle in hand they're more likely to smash it in the dark alley rather than a lit one.

8.5 SAFETY AUDIT FORM

Nutana Neighbourhood

Name: _____

General Area: _____

Specific Location: _____

Date: _____ Day: _____ Time: _____

Age: (Please circle the age range that applies to you)

- | | | |
|-------|-------|-------|
| 10-14 | 40-44 | 70-74 |
| 15-19 | 45-49 | 75-79 |
| 20-24 | 50-54 | 80-84 |
| 25-29 | 55-59 | 85-89 |
| 30-34 | 60-64 | 90-94 |
| 35-39 | 65-69 | 95+ |

Sex: _____

Affiliation (Community Association, Merchant, Resident, etc.): _____

One of the goals of the City of Saskatoon's Strategic Plan is to increase the participation of Aboriginal people in City programs and processes. By answering the following question, you will be helping the City Planning Branch to evaluate its current efforts to increase participation from the Aboriginal community in local area planning and related processes.

Do you identify yourself as an Aboriginal person? YES / NO (circle one)

GENERAL IMPRESSIONS

1. Your gut reactions: _____

2. What five words best describe the place?

LIGHTING

3. General impression of lighting:

- Very poor Poor Satisfactory
 Good Very good
 Too dark Too bright

4. Is the lighting even?

yes no where? _____

5. Is there glare from the lights that prevent you from seeing where you are going?

yes no where? _____

6. Can you identify a face 25 paces away? (walk 25 paces from the group to check)

yes no where are you? _____

7. Do you know where/whom to call if lights are out, broken, not yet turned on, etc.?

yes no

8. Is the lighting obscured by trees or bushes?

yes no where? _____

9. How well does the lighting illuminate the following:

	Very poor					Very well	Location
Sidewalks	1	2	3	4	5		
Bus stops	1	2	3	4	5		
Seating	1	2	3	4	5		
Signs	1	2	3	4	5		
Entrances	1	2	3	4	5		
Exits	1	2	3	4	5		
Alleys	1	2	3	4	5		
Walkways	1	2	3	4	5		
Phone booths	1	2	3	4	5		
(other)	1	2	3	4	5		
	1	2	3	4	5		

If poor or very poor, please describe why or use this space for any other comments:

SIGNAGE

10. Are there location or street signs nearby that can help identify where you are?

yes no

11. Are there signs that show you where to get emergency assistance if needed?

yes no

12. Impression of overall signage:

- Very poor Poor Satisfactory
 Good Very good

13. What signs should be added? (if necessary)

SIGHTLINES

14. Can you clearly see what's up ahead? yes no

15. If no, why not?

- Bushes Fences Hill
 Other _____

16. Are there places someone could be hiding? yes no

17. If yes, where? _____

18. What would make it easier to see?

E.g.:

- Transparent materials such as chain link fence, glass, etc. Angled corners
 Security mirrors Trimmed bushes
 Snow cleared Vehicles moved

Other comments?

19. How many people are likely to be around?

▪ In the early morning:

None A few Several many

▪ During the day:

None A few Several many

▪ In the evening:

None A few Several many

▪ Late at night (after 10pm):

None A few Several many

20. Is it easy to predict when people will be around?

yes no

Other comments?

ISOLATION – EAR DISTANCE

21. Are there any areas where a call for help could not be heard?

yes no don't know

22. How far away is the nearest emergency service such as an alarm, security personnel, crisis telephone? _____ don't know

23. Can you see a telephone or a sign directing you to emergency assistance?

yes no

24. Is the area patrolled?

yes no don't know

25. If yes, how frequently?

every hour once per afternoon/evening don't know

MOVEMENT PREDICTORS (a predictable or unchangeable route or path)

26. How easy is it to predict a person's movements (e.g., their route)?

- very easy somewhat obvious no way of knowing

27. Is there always an alternative well-lit and frequently travelled route or path available?

- yes no don't know

28. Can you tell what is at the other end of paths, tunnels, or walkways in this area?

- yes no

29. Are there corners, alcoves, or bushes where someone could hide and wait for you?

- yes no where? _____

Other comments?

POSSIBLE ENTRAPMENT SITES

30. Are there small, confined areas where you would be hidden from view?

- e.g., between garbage bins unlocked equipment or utility shed
 alley or laneway recessed doorway construction site

Other: _____

ESCAPE ROUTES

31. How easy would it be for an offender to disappear?

- very easy quite easy not very easy

32. Do lanes/ streets / walkways have more than one exit?

- yes no don't know

33. If yes, please describe.

NEARBY LAND USES

34. What is the surrounding or nearby land used for (list all that apply)?

- stores offices restaurants
- residential houses or streets factories
- busy traffic heavily treed/wooded areas
- riverbank parking lots campus buildings
- don't know Other: _____

35. Can you identify who owns or maintains nearby land?

- yes no where? _____

36. Impressions of nearby land uses:

- Very poor Poor Satisfactory
- Good Very good

MAINTENANCE

37. Impressions of maintenance:

- Very poor Poor Satisfactory
- Good Very good

38. Is there a lot of litter lying around?

- yes no

39. Do you know to whom maintenance concerns should be reported?

- yes no

40. From your experience, how long do repairs generally take?

- 1 day Within 1 week 1 – 3 weeks
- More than 3 weeks Don't know

FACTORS THAT MAKE THE PLACE MORE HUMAN

41. Does this area feel cared for?

- yes no

42. Does this area feel abandoned?

- yes no

Why?

43. Is there graffiti on the walls?

- yes no

44. In your opinion, are there racist or sexist slogans/ signs/ images on the walls?

- yes no

45. Are there signs of vandalism?

- yes no

46. Would other materials, tones, textures or colours improve your sense of safety?

- yes no

Other Comments:

OVERALL DESIGN

47. Impressions of overall design of this area:

- Very poor Poor Satisfactory
 Good Very good

48. If you weren't familiar with this area, would it be easy to find your way around?

- yes no

49. Does the place “make sense”?

yes no

50. Is your neighbourhood walkable (i.e. to school, to work, to friends, to places you need)?

yes no

Other comments:

IMPROVEMENTS

51. What improvements would you like to see?

52. Do you have any specific recommendations?

8.6 CRIME PREVENTION THROUGH ENVIRONMENTAL DESIGN

DEFINITION

CPTED focuses on the relationship of the built environment and the social behaviour that occurs in that built environment. It is an inclusive, collaborative, and interdisciplinary approach to reducing opportunities for crime, improving perceptions of safety, and strengthening community bonds. CPTED principles, which are now widely applied in the United States, Canada, and other Commonwealth countries, stem from the observed phenomenon that certain “cues” in the physical environment can prompt undesirable or crime-related behaviours as well as perceptions of being safe or unsafe in users of that same environment.

CPTED practitioners utilize design, activity, and community involvement to reduce opportunities for crime and reduce users’ fear of crime. CPTED strategies are usually developed jointly by an interdisciplinary team that ensures a balanced approach to problem solving that includes the community in all aspects of the process.

CPTED PRINCIPLES

The principles of Crime Prevention Through Environmental Design are divided into categories commonly known as “First Generation”, “First Generation Advanced”, and “Second Generation”. First Generation and First Generation Advanced principles focus mainly on addressing the physical environment, while Second Generation principles focus on how people interact with each other in that physical environment and have a distinctive social change theme. A brief explanation of each CPTED principle follows.

First Generation CPTED Principles

- **Natural Surveillance:** is the concept of putting “eyes on the street”, making a place unattractive for potential illegitimate behaviour. Street design, landscaping, lighting and site design (i.e. neighbourhood layout) all influence the potential for natural surveillance.
- **Access Control:** is controlling who goes in and out of a neighbourhood, park, building, etc. Access control includes creating a sense of “turf”, for legitimate users, while focusing on formal and informal entry and exit points.
- **Image:** is the appearance of a place and how this is instrumental in creating a sense of place or territory for legitimate users of the space. A place that does not appear to be maintained or cared for may indicate to criminals that the place will not be defended and criminal activity in the area will be tolerated.
- **Territoriality:** is the concept of creating and fostering places that are adopted by the legitimate users of the space (i.e. take ownership); making it less likely for people who do not belong to engage in criminal or nuisance behaviour at that location.

First Generation Advanced CPTED Principles

- **Conflicting User Groups:** refers to instances where different user groups may conflict (e.g. a school near industrial development or a seniors centre near a nightclub). Careful consideration of compatible land uses can minimize potential conflicts between groups.
- **Activity Support:** is the concept of filling an area with legitimate users (by facilitating or directly scheduling activities or events) so potential offenders cannot offend with impunity. Places and facilities that are underused can become locations with the potential for criminal activity.
- **Crime Generators:** are activity nodes that may generate crime. For example, a 24 hour convenience or liquor stores may not be a problem in itself but where it is located in the community may cause conflict or unforeseen secondary activity. The location of some land uses is critical to ensuring an activity does not increase the opportunities for crime to occur or reduce users' and resident's perceptions of their safety in the area.
- **Land Use Mix:** is the concept that diversity in land uses can be a contributor or detractor for crime opportunities. Separating land uses (i.e. residential) from each other can create places that are unused during certain times of the day.
- **Movement Predictors:** force people, especially pedestrians and cyclists, along a particular route or path, without providing obvious alternative escape routes or strategies for safety. Potential attackers can predict where persons will end up once they are on a certain path (e.g. a pedestrian tunnel or walkway).
- **Displacement:** can be positive or negative so it is critical to understand how crime may move in time or space and what the impact may be. In general, the displacement that must be considered is:
 - Negative displacement – crime movement makes things worse;
 - Diffusion of benefits – displacement can reduce the overall number of crimes more widely than expected;
 - Positive displacement – opportunities for crime are intentionally displaced which minimizes the impact of the crime.

Second Generation CPTED Principles

- **Cohesion:** is the supportive relationships and interactions between all users of a place to support and maintain a sense of safety. Though not a specific urban design function, design can enhance the opportunity for positive social cohesion by providing physical places where this can occur, such as activity rooms, park gazebos, or multi-purpose rooms in schools and community centers. In some cases property owners or building managers can provide opportunities for social programming. This will increase the ability of local residents or users of a space to positively address issues as they arise.
- **Connectivity:** refers to the social and physical interactions and relationships external to the site itself. It recognizes that any given place should not operate in isolation from surrounding neighbourhoods and/or areas. Features such as walkways and roadways connecting a particular land use to the surrounding neighbourhoods and/or areas can accomplish this. Features such as centrally located community centers or program offices can also encourage activities to enhance this.
- **Capacity:** is the ability for any given space or neighbourhood to support its intended use. For example, excessive quantities of similar land uses in too small an area, such as

abandoned buildings or bars, can create opportunities for crime. When a place is functioning either over or under capacity, it can be detrimental to neighbourhood safety.

- **Culture:** is the overall makeup and expression of the users of a place. Also known as “placemaking,” it involves artistic, musical, sports, or other local cultural events to bring people together in time and purpose. Physical designs that can encourage this include public multi-purpose facilities, sports facilities, and areas that local artists and musicians might use. Community memorials, public murals, and other cultural features also enhance this. These features create a unique context of the environment and help determine the design principles and policies that best support the well being of all user groups and contribute to their cohesiveness.

CPTED principles are generally considered and utilized in combination with one another. However, for any CPTED strategy to be successful, the nature of the crime or safety-related issue must be carefully and accurately defined. It is important to understand the context within which crime occurs in an area to be able to implement appropriate solutions.

RISK ASSESSMENT

Risk Assessments combine scientific field research and analytical methods with the practical experience of crime prevention practitioners and the perception of community members; a combination of qualitative (statistical) and qualitative (perception) approaches. In a Risk Assessment, a wide variety of qualitative and quantitative data is collected and considered to allow for an accurate portrayal of issues. This in turn allows for a much more effective solution or action plan to be developed. A Risk Assessment is critical to the success of a CPTED strategy because, in addition to “obvious” problems, there are often less obvious or underlying problems that need to be identified and addressed.

Data collection such as crime statistics, resident surveys, user surveys, and population demographics are all part of the quantitative picture. This information aids in understanding the context around the issue and the opportunities for crime. The other part of the picture, the qualitative, deals with the perceptions that people have about their safety. Safety Audits, perception and intercept surveys (of actual users), and site inspections all add to the understanding of what environmental cues the area is presenting and how these affect people’s “feelings” of safety.

THE SAFETY AUDIT & CPTED REVIEW PROCESS

A Safety Audit is a process that allows the regular users of an area to identify places that make them feel unsafe. Area residents are considered the “local experts” because they are the most familiar with the area and what happens on a day-to-day basis. Change then becomes the responsibility of a group of people who care about the community and will include audit participants, the community as a whole, and local government. Residents become directly involved in making their community safer through this process.

The goal of a Safety Audit is to identify and to improve an environment. Reduced opportunities for crime and improved perceptions of crime in the area improve everyone's personal safety. Depending on the circumstances, residents, local business, and local government should work together to find solutions to safety problems in the community using the audit results as one tool, or input, in the overall Risk Assessment of the area. A Safety Audit is a highly flexible process and can be easily adapted to meet the needs of the community. In Saskatoon, Safety Audits based on CPTED principles have now been applied in a number of settings including parks, streets, and buildings.

A CPTED Review is similar to a Safety Audit in that it reviews an area of concern using the principles of CPTED, but has less public participation. It can be used when the area is small, timelines are short, or public participation is not possible or very difficult. It is also effective if there is specialized knowledge needed to assess the site or the potential solutions.

The application of the Crime Prevention Through Environmental Design principles will support the continued reduction of a number of the types of crime summarized in the previous tables. CPTED principles help encourage visibility and creating a sense of ownership among neighbourhood residents for their public spaces. Criminals interested in engaging in break and enter or mischief crimes may be deterred if they feel too visible and have the sense that people in the area are likely to view and report their activities. Appropriate, enhanced lighting, tree trimming and property maintenance are all elements of CPTED that can make a neighbourhood feel safer to its residents while making criminals uncomfortable, enough to deter their illegal activities.

Neighbourhood connectivity is an important element in reducing crime. Residents who are actively engaged in their community are more likely to be aware of and take ownership for their surroundings. Nutana, with its active Community Association and the Broadway Business Improvement District (BID), already has a number of strong community connections. These connections should continue to be supported and promoted as a key element of maintaining a safe community.